

Anti-SLC25A31 Polyclonal Antibody

Cat: K107967P

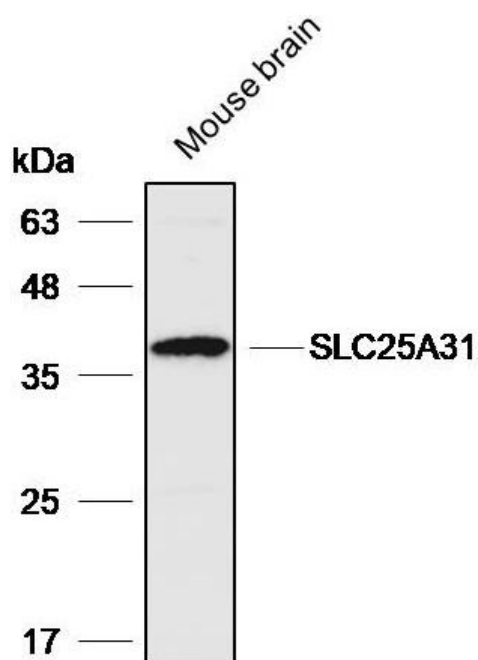
Summary:

- 【Product name】** : Anti-SLC25A31 antibody **【Source】** : Rabbit
- 【Isotype】** : IgG **【Species reactivity】** : Human Mouse
- 【Swiss Prot】** : Q9H0C2 **【Gene ID】** : 83447
- 【Calculated】** : MW:35kDa **【Observed】** : MW:38kDa
- 【Purification】** : Octanoic acid-ammonium sulfate precipitation
- 【Tested applications】** : WB IHC
- 【Recommended dilution】** : WB 1:1000-3000. IHC 1:50-200.
- 【WB Positive sample】** : Mouse brain
- 【IHC Positive sample】** : Human testis cancer
- 【Subcellular location】** : Cytoplasm Nucleus
- 【Immunogen】** : A synthetic peptide of human SLC25A31
- 【Storage】** : Shipped at 4°C. Upon delivery aliquot and store at -20°C

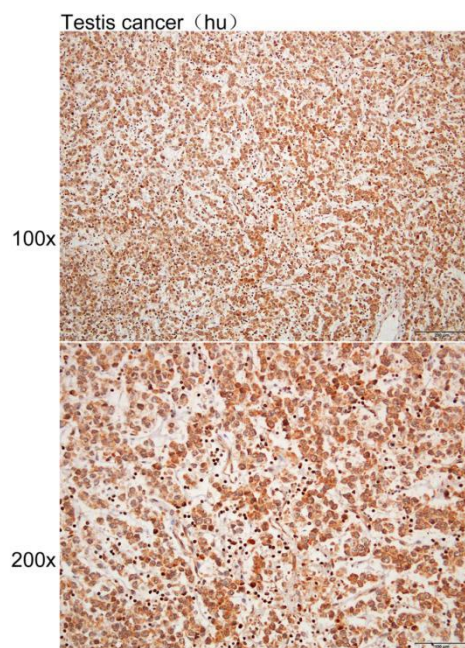
Background:

The protein encoded by this gene is a member of the ADP/ATP carrier family of proteins that exchange cytosolic ADP for matrix ATP in the mitochondria. Cells over-expressing this gene have been shown to display an anti-apoptotic phenotype. This protein is also thought to play a role in spermatogenesis, where it is believed to associate with a part of the flagellar cytoskeleton and with glycolytic enzymes. Male mice with mutations in the mouse ortholog of this gene are sterile and spermatocytes display an early meiotic arrest phenotype. Alternative splicing results in multiple transcript variants encoding different isoforms.

Verified picture



Western blot analysis with SLC25A31 antibody diluted at 1:2000; Lane: Mouse brain



Immunohistochemistry of paraffin-embedded Human testis cancer with SLC25A31 antibody diluted at 1:100