

Anti-TPM1 Polyclonal Antibody

Cat: K107945P

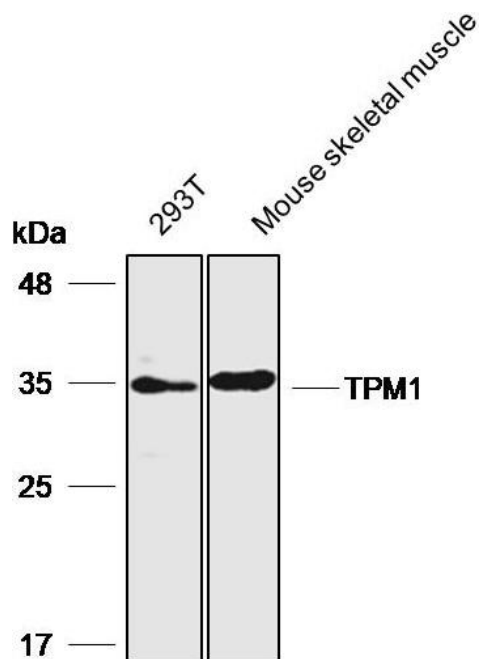
Summary:

【Product name】 : Anti-TPM1 antibody	【Source】 : Rabbit
【Isotype】 : IgG	【Species reactivity】 : Human Mouse Rat
【Swiss Prot】 : P09493	【Gene ID】 : 7168
【Calculated】 : MW:26/32kDa	【Observed】 : MW:35kDa
【Purification】 : Affinity purification	
【Tested applications】 : WB	
【Recommended dilution】 : WB 1:1000-3000.	
【WB Positive sample】 : 293T, Mouse skeletal muscle	
【Subcellular location】 : Cytoplasm	
【Immunogen】 : A synthetic peptide of human TPM1	
【Storage】 : Shipped at 4°C. Upon delivery aliquot and store at -20°C	

Background:

This gene is a member of the tropomyosin family of highly conserved, widely distributed actin-binding proteins involved in the contractile system of striated and smooth muscles and the cytoskeleton of non-muscle cells. Tropomyosin is composed of two alpha-helical chains arranged as a coiled-coil. It is polymerized end to end along the two grooves of actin filaments and provides stability to the filaments. The encoded protein is one type of alpha helical chain that forms the predominant tropomyosin of striated muscle, where it also functions in association with the troponin complex to regulate the calcium-dependent interaction of actin and myosin during muscle contraction. In smooth muscle and non-muscle cells, alternatively spliced transcript variants encoding a range of isoforms have been described. Mutations in this gene are associated with type 3 familial hypertrophic cardiomyopathy.

Verified picture



Western blot analysis with TPM1 antibody diluted at 1:2000; Lane: 293T, Mouse skeletal muscle