

Anti-DSE Polyclonal Antibody

Cat: K107840P

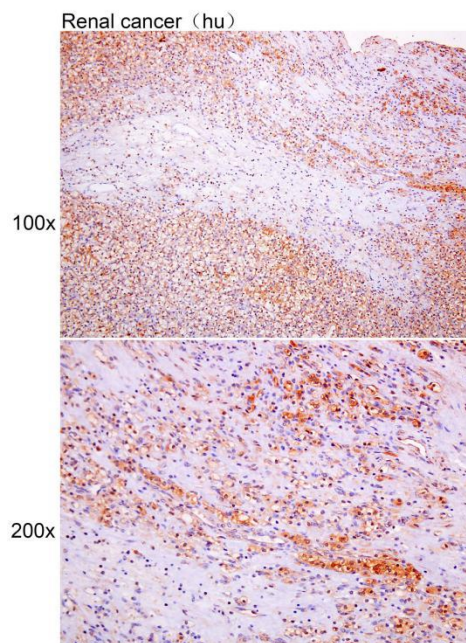
Summary:

【Product name】 : Anti-DSE antibody	【Source】 : Rabbit
【Isotype】 : IgG	【Species reactivity】 : Human
【Swiss Prot】 : Q9UL01	【Gene ID】 : 29940
【Calculated】 : MW:110kDa	
【Purification】 : Affinity purification	
【Tested applications】 : IHC	
【Recommended dilution】 : IHC 1:50-200.	
【IHC Positive sample】 : Human renal cancer	
【Subcellular location】 : Cytoplasm Nucleus	
【Immunogen】 : Recombinant protein of human DSE	
【Storage】 : Shipped at 4°C. Upon delivery aliquot and store at -20°C	

Background:

The protein encoded by this gene is a tumor-rejection antigen. It is localized to the endoplasmic reticulum and functions to convert D-glucuronic acid to L-iduronic acid during the biosynthesis of dermatan sulfate. This antigen possesses tumor epitopes capable of inducing HLA-A24-restricted and tumor-specific cytotoxic T lymphocytes in cancer patients and may be useful for specific immunotherapy. Mutations in this gene cause inmusculocontractural Ehlers-Danlos syndrome. Alternative splicing results in multiple transcript variants. A related pseudogene has been identified on chromosome 9, and a paralogous gene exists on chromosome 18.

Verified picture



Immunohistochemistry of paraffin-embedded
Human renal cancer with DSE antibody diluted
at 1:100