

Anti-CLN6 Polyclonal Antibody

Cat: K107797P

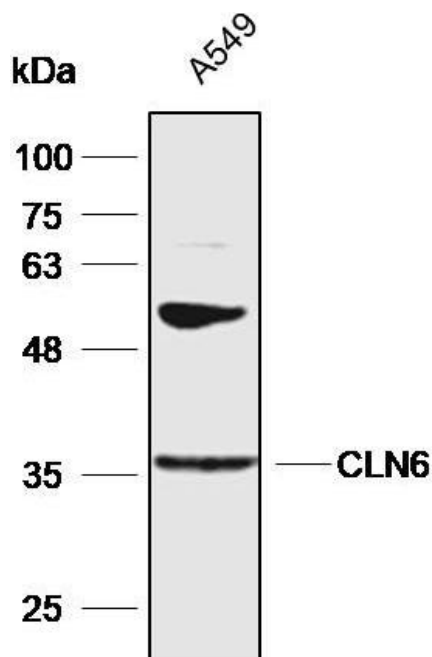
Summary:

【Product name】 : Anti-CLN6 antibody	【Source】 : Rabbit
【Isotype】 : IgG	【Species reactivity】 : Human
【Swiss Prot】 : Q9NWW5	【Gene ID】 : 54982
【Calculated】 : MW:35/39kDa	【Observed】 : MW:36kDa
【Purification】 : Affinity purification	
【Tested applications】 : WB IHC	
【Recommended dilution】 : WB 1:2000-5000. IHC 1:25-100.	
【WB Positive sample】 : A549	
【IHC Positive sample】 : Human colorectal cancer	
【Subcellular location】 : Cytoplasm	
【Immunogen】 : A synthetic peptide of Human CLN6	
【Storage】 : Shipped at 4°C. Upon delivery aliquot and store at -20°C	

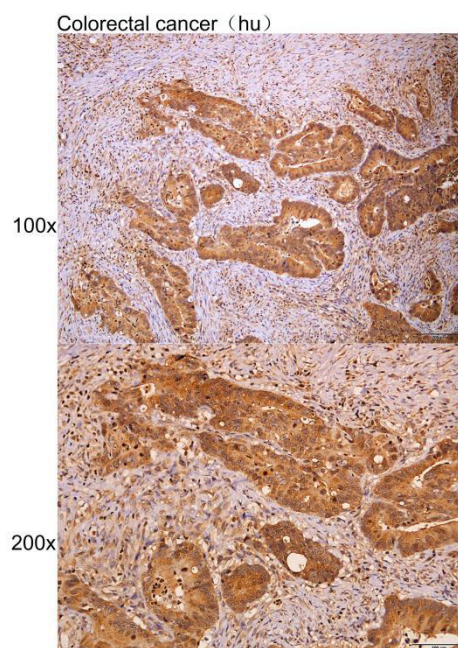
Background:

This gene is one of eight which have been associated with neuronal ceroid lipofuscinoses (NCL). Also referred to as Batten disease, NCL comprises a class of autosomal recessive, neurodegenerative disorders affecting children. The genes responsible likely encode proteins involved in the degradation of post-translationally modified proteins in lysosomes. The primary defect in NCL disorders is thought to be associated with lysosomal storage function.

Verified picture



Western blot analysis with CLN6 antibody diluted at 1:4000; Lane: A549



Immunohistochemistry of paraffin-embedded Human colorectal cancer with CLN6 antibody diluted at 1:40