

Anti-S100A1 Polyclonal Antibody

Cat: K107736P

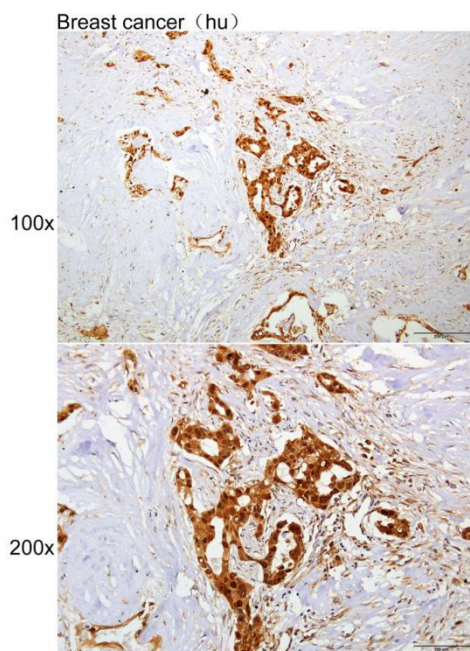
Summary:

| | |
|---|-------------------------------------|
| 【Product name】 : Anti-S100A1 antibody | 【Source】 : Rabbit |
| 【Isotype】 : IgG | 【Species reactivity】 : Human |
| 【Swiss Prot】 : P23297 | 【Gene ID】 : 6271 |
| 【Calculated】 : MW:11kDa | |
| 【Purification】 : Affinity purification | |
| 【Tested applications】 : IHC | |
| 【Recommended dilution】 : IHC 1:100-300. | |
| 【IHC Positive sample】 : Human breast cancer | |
| 【Subcellular location】 : Nucleus Cytoplasm | |
| 【Immunogen】 : Recombinant protein of human S100A1 | |
| 【Storage】 : Shipped at 4°C. Upon delivery aliquot and store at -20°C | |

Background:

The protein encoded by this gene is a member of the S100 family of proteins containing 2 EF-hand calcium-binding motifs. S100 proteins are localized in the cytoplasm and/or nucleus of a wide range of cells, and involved in the regulation of a number of cellular processes such as cell cycle progression and differentiation. S100 genes include at least 13 members which are located as a cluster on chromosome 1q21. This protein may function in stimulation of Ca²⁺-induced Ca²⁺ release, inhibition of microtubule assembly, and inhibition of protein kinase C-mediated phosphorylation. Reduced expression of this protein has been implicated in cardiomyopathies.

Verified picture



Immunohistochemistry of paraffin-embedded
Human breast cancer with S100A1 antibody
diluted at 1:200