

Anti-RAB11A Polyclonal Antibody

Cat: K107699P

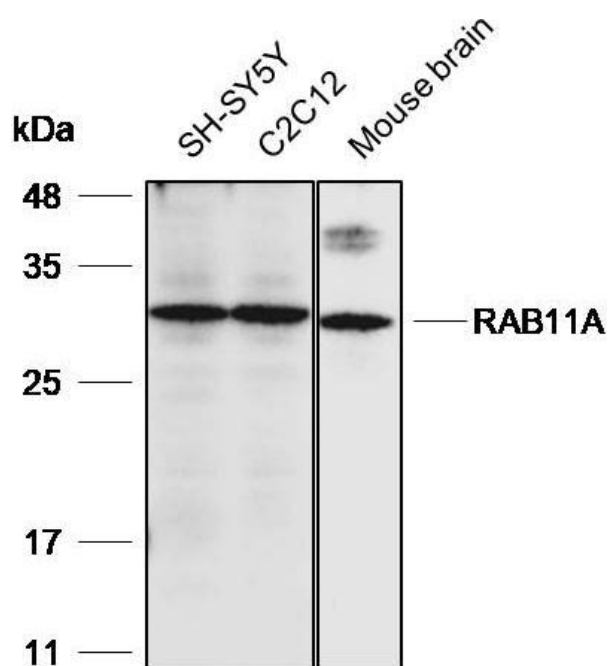
Summary:

【Product name】 : Anti-RAB11A antibody	【Source】 : Rabbit
【Isotype】 : IgG	【Species reactivity】 : Human Mouse
【Swiss Prot】 : P62491	【Gene ID】 : 8766
【Calculated】 : MW:17/24kDa	【Observed】 : MW:31kDa
【Purification】 : Affinity purification	
【Tested applications】 : WB IHC	
【Recommended dilution】 : WB 1:2000-5000. IHC 1:50-200.	
【WB Positive sample】 : SH-SY5Y,C2C12,Mouse brain	
【IHC Positive sample】 : Human pancreatic cancer	
【Subcellular location】 : Cell membrane Cytoplasm	
【Immunogen】 : Recombinant protein of human RAB11A	
【Storage】 : Shipped at 4°C. Upon delivery aliquot and store at -20°C	

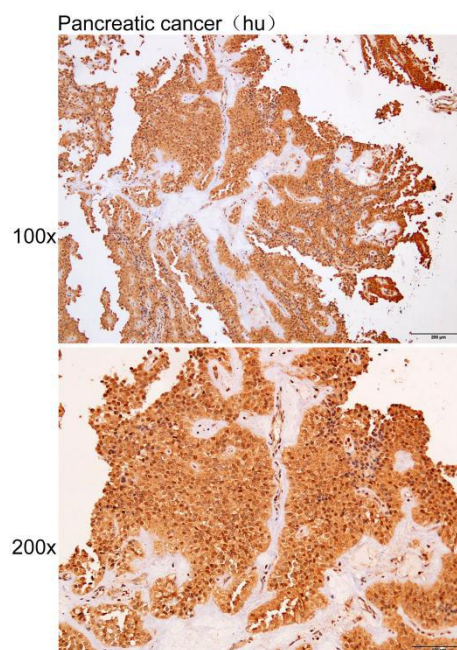
Background:

The protein encoded by this gene belongs to the Rab family of the small GTPase superfamily. It is associated with both constitutive and regulated secretory pathways, and may be involved in protein transport. Two transcript variants encoding different isoforms have been found for this gene.

Verified picture



Western blot analysis with RAB11A antibody diluted at 1:3000; Lane: SH-SY5Y, C2C12, Mouse brain



Immunohistochemistry of paraffin-embedded Human pancreatic cancer with RAB11A antibody diluted at 1:80