

## Anti-CLDN19 Polyclonal Antibody

Cat: K107681P

### Summary:

---

**【Product name】** : Anti-CLDN19 antibody

**【Source】** : Rabbit

**【Isotype】** : IgG

**【Species reactivity】** : Human Rat

**【Swiss Prot】** : Q8N6F1

**【Gene ID】** : 149461

**【Calculated】** : MW:23kDa

**【Purification】** : Affinity purification

**【Tested applications】** : IHC

**【Recommended dilution】** : IHC 1:25-100.

**【IHC Positive sample】** : Human skin cancer

**【Subcellular location】** : Cell membrane Nucleus

**【Immunogen】** : A synthetic peptide of human CLDN19

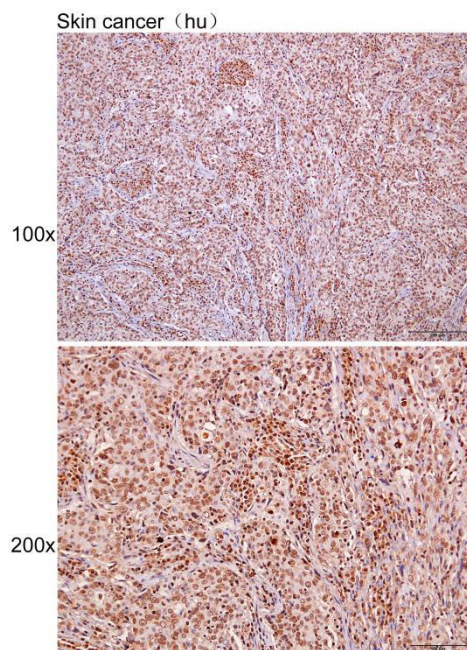
**【Storage】** : Shipped at 4°C. Upon delivery aliquot and store at -20°C

### Background:

---

The product of this gene belongs to the claudin family. It plays a major role in tight junction-specific obliteration of the intercellular space, through calcium-independent cell-adhesion activity. Defects in this gene are the cause of hypomagnesemia renal with ocular involvement (HOMGO). HOMGO is a progressive renal disease characterized by primary renal magnesium wasting with hypomagnesemia, hypercalciuria and nephrocalcinosis associated with severe ocular abnormalities such as bilateral chorioretinal scars, macular colobomata, significant myopia and nystagmus. Alternatively spliced transcript variants encoding distinct isoforms have been identified for this gene.

## Verified picture



Immunohistochemistry of paraffin-embedded  
Human skin cancer with CLDN19 antibody  
diluted at 1:40