

Anti-REL Polyclonal Antibody

Cat: K107678P

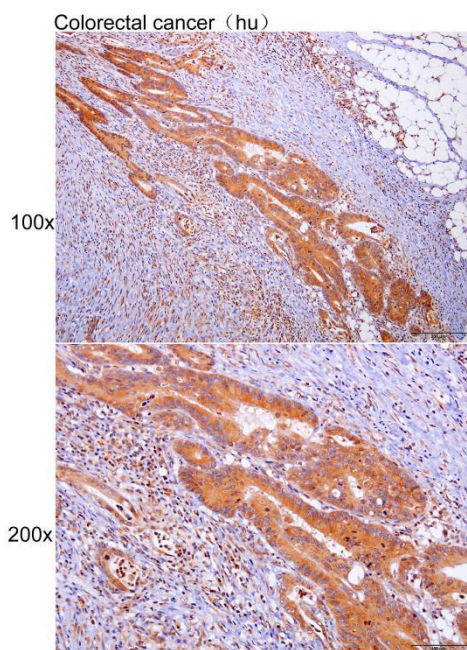
Summary:

【Product name】 : Anti-REL antibody	【Source】 : Rabbit
【Isotype】 : IgG	【Species reactivity】 : Human Mouse
【Swiss Prot】 : Q04864	【Gene ID】 : 79174
【Calculated】 : MW:65/68kDa	
【Purification】 : Affinity purification	
【Tested applications】 : IHC	
【Recommended dilution】 : IHC 1:50-200.	
【IHC Positive sample】 : Human colorectal cancer	
【Subcellular location】 : Cytoplasm Nucleus	
【Immunogen】 : A synthetic peptide of human REL	
【Storage】 : Shipped at 4°C. Upon delivery aliquot and store at -20°C	

Background:

This gene encodes a protein that belongs to the Rel homology domain/immunoglobulin-like fold, plexin, transcription factor (RHD/IPT) family. Members of this family regulate genes involved in apoptosis, inflammation, the immune response, and oncogenic processes. This proto-oncogene plays a role in the survival and proliferation of B lymphocytes. Mutation or amplification of this gene is associated with B-cell lymphomas, including Hodgkin's lymphoma. Single nucleotide polymorphisms in this gene are associated with susceptibility to ulcerative colitis and rheumatoid arthritis. Alternative splicing results in multiple transcript variants encoding different isoforms.

Verified picture



Immunohistochemistry of paraffin-embedded
Human colorectal cancer with MPC2
antibody diluted at 1:100