

## Anti-CANX Polyclonal Antibody

Cat: K107670P

### Summary:

---

**【Product name】** : Anti-CANX antibody

**【Source】** : Rabbit

**【Isotype】** : IgG

**【Species reactivity】** : Human Mouse Rat

**【Swiss Prot】** : P27824

**【Gene ID】** : 821

**【Calculated】** : MW:55/67/71kDa

**【Observed】** : MW:63kDa

**【Purification】** : Affinity purification

**【Tested applications】** : WB IHC

**【Recommended dilution】** : WB 1:2000-1:5000. IHC 1:100-300.

**【WB Positive sample】** : HeLa,MCF-7,A431,A549,MDA-MB231,NIH/3T3,Jurkat,A375,L02,HepG2,

Mouse brain,Rat brain

**【IHC Positive sample】** : Rat brain

**【Subcellular location】** : Cytoplasm

**【Immunogen】** : A synthetic peptide of human CANX

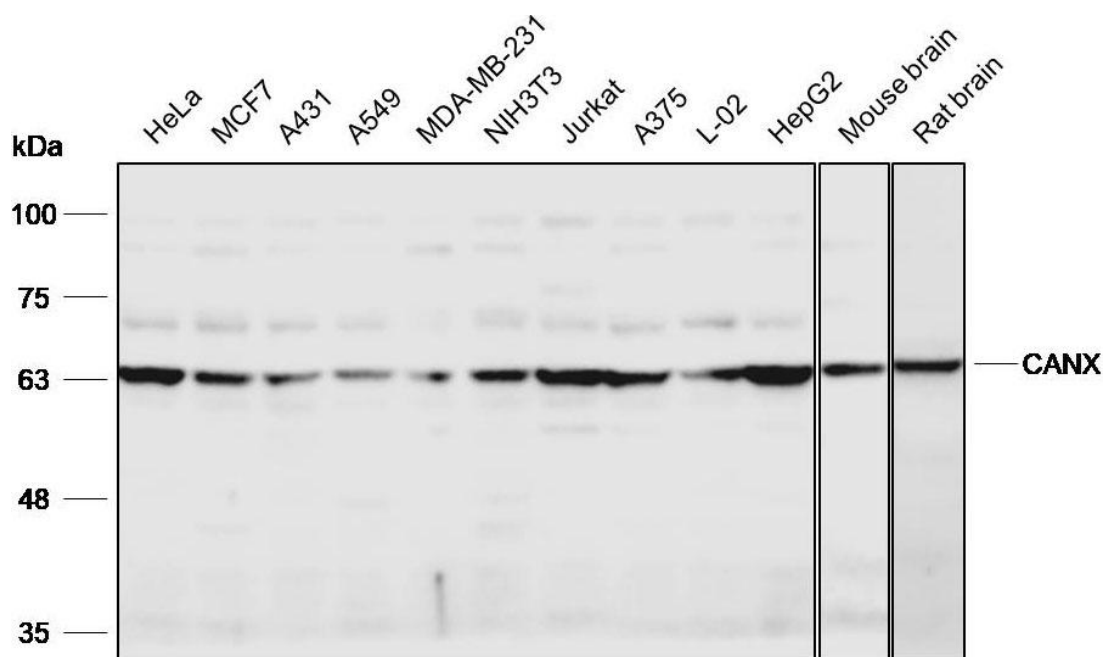
**【Storage】** : Shipped at 4°C. Upon delivery aliquot and store at -20°C

### Background:

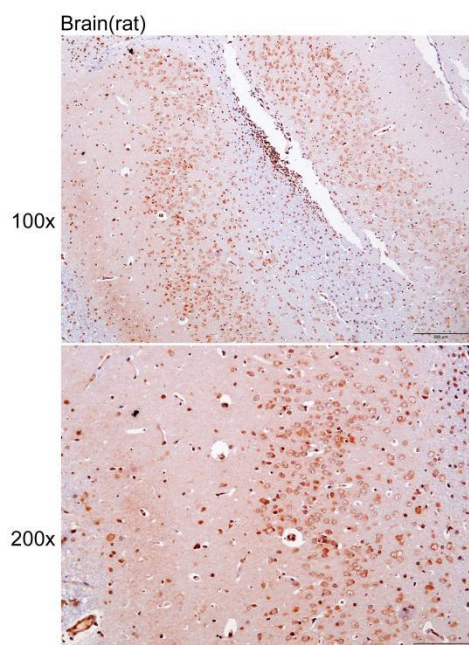
---

This gene encodes a member of the calnexin family of molecular chaperones. The encoded protein is a calcium-binding, endoplasmic reticulum (ER)-associated protein that interacts transiently with newly synthesized N-linked glycoproteins, facilitating protein folding and assembly. It may also play a central role in the quality control of protein folding by retaining incorrectly folded protein subunits within the ER for degradation. Alternatively spliced transcript variants encoding the same protein have been described.

## Verified picture



Western blot analysis with CANX antibody diluted at 1:3000; Lane: HeLa, MCF-7, A431, A549, MDA-MB231, NIH/3T3, Jurkat, A375, L02, HepG2, Mouse brain, Rat brain



Immunohistochemistry of paraffin-embedded  
Rat brain with CANX antibody diluted at  
1:200