

Anti-HLA E Polyclonal Antibody

Cat: K107643P

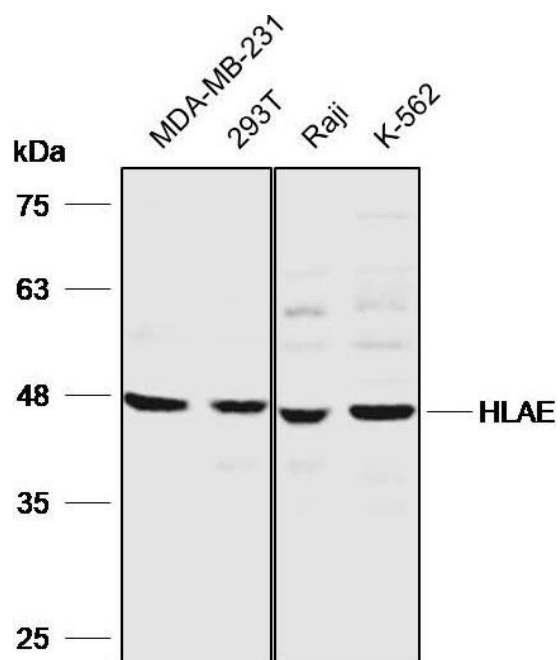
Summary:

| | |
|---|-------------------------------------|
| 【Product name】 : Anti-HLA E antibody | 【Source】 : Rabbit |
| 【Isotype】 : IgG | 【Species reactivity】 : Human |
| 【Swiss Prot】 : P13747 | 【Gene ID】 : 3133 |
| 【Calculated】 : MW:40kDa | 【Observed】 : MW:46kDa |
| 【Purification】 : Affinity purification | |
| 【Tested applications】 : WB IHC | |
| 【Recommended dilution】 : WB 1:5000-1:8000. IHC 1:50-200. | |
| 【WB Positive sample】 : MDA-MB231,293T,Raji,K-562 | |
| 【IHC Positive sample】 : Human endometrial cancer | |
| 【Subcellular location】 : Cytoplasm Cell membrane | |
| 【Immunogen】 : Recombinant protein of human HLA E | |
| 【Storage】 : Shipped at 4°C. Upon delivery aliquot and store at -20°C | |

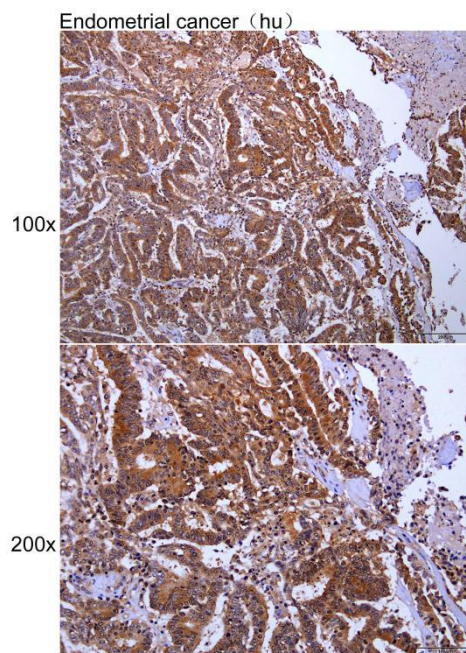
Background:

HLA-E belongs to the HLA class I heavy chain paralogues. This class I molecule is a heterodimer consisting of a heavy chain and a light chain (beta-2 microglobulin). The heavy chain is anchored in the membrane. HLA-E binds a restricted subset of peptides derived from the leader peptides of other class I molecules. The heavy chain is approximately 45 kDa and its gene contains 8 exons. Exon one encodes the leader peptide, exons 2 and 3 encode the alpha1 and alpha2 domains, which both bind the peptide, exon 4 encodes the alpha3 domain, exon 5 encodes the transmembrane region, and exons 6 and 7 encode the cytoplasmic tail.

Verified picture



Western blot analysis with HLA E antibody diluted at 1:6000; Lane: MDA-MB231, 293T, Raji, K-562



Immunohistochemistry of paraffin-embedded Human endometrial cancer with HLA E antibody diluted at 1:100