

Anti-PSCA Polyclonal Antibody

Cat: K107627P

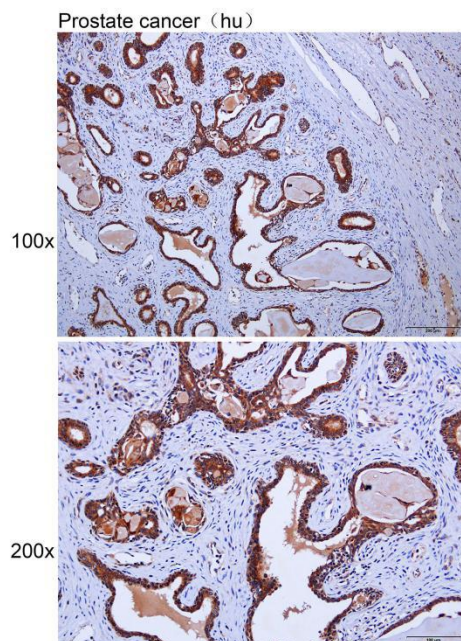
Summary:

【Product name】 : Anti-PSCA antibody	【Source】 : Rabbit
【Isotype】 : IgG	【Species reactivity】 : Human Mouse
【Swiss Prot】 : O43653	【Gene ID】 : 8000
【Calculated】 : MW:12kDa	
【Purification】 : Affinity purification	
【Tested applications】 : IHC	
【Recommended dilution】 : IHC 1:50-200.	
【IHC Positive sample】 : Human prostate cancer	
【Subcellular location】 : Cytoplasm Cell membrane	
【Immunogen】 : A synthetic peptide of human PSCA	
【Storage】 : Shipped at 4°C. Upon delivery aliquot and store at -20°C	

Background:

This gene encodes a glycosylphosphatidylinositol-anchored cell membrane glycoprotein. In addition to being highly expressed in the prostate it is also expressed in the bladder, placenta, colon, kidney, and stomach. This gene is up-regulated in a large proportion of prostate cancers and is also detected in cancers of the bladder and pancreas. This gene includes a polymorphism that results in an upstream start codon in some individuals; this polymorphism is thought to be associated with a risk for certain gastric and bladder cancers. Alternative splicing results in multiple transcript variants.

Verified picture



Immunohistochemistry of paraffin-embedded
Human prostate cancer with PSCA antibody
diluted at 1:100