

Anti-BRMS-1 Polyclonal Antibody

Cat: K107585P

Summary:

【Product name】 : Anti-BRMS-1 antibody

【Source】 : Rabbit

【Isotype】 : IgG

【Species reactivity】 : Human Mouse Rat Cow

【Swiss Prot】 : Q9HCU9

【Gene ID】 : 25855

【Calculated】 : MW:28kDa

【Purification】 : Affinity purification

【Tested applications】 : IHC

【Recommended dilution】 : IHC 1:200-600.

【IHC Positive sample】 : Human prostate cancer

【Subcellular location】 : Nucleus

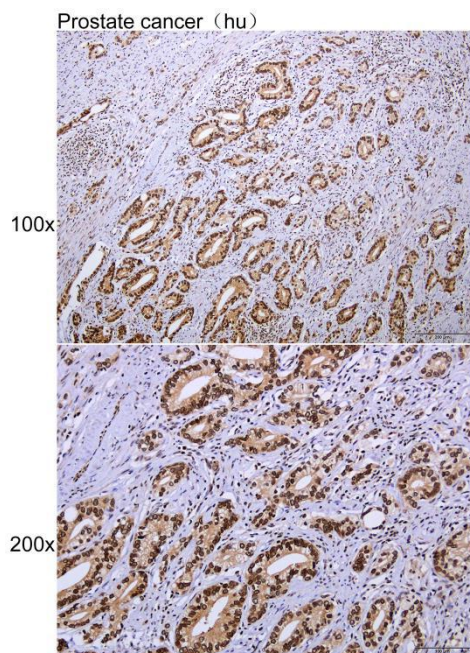
【Immunogen】 : A synthetic peptide of human BRMS-1

【Storage】 : Shipped at 4°C. Upon delivery aliquot and store at -20°C

Background:

This gene reduces the metastatic potential, but not the tumorigenicity, of human breast cancer and melanoma cell lines. The protein encoded by this gene localizes primarily to the nucleus and is a component of the mSin3a family of histone deacetylase complexes (HDAC). The protein contains two coiled-coil motifs and several imperfect leucine zipper motifs. Alternative splicing results in two transcript variants encoding different isoforms.

Verified picture



Immunohistochemistry of paraffin-embedded
Human prostate cancer with BRMS-1
antibody diluted at 1:400