

## Anti-Tubb3 Polyclonal Antibody

Cat: K107580P

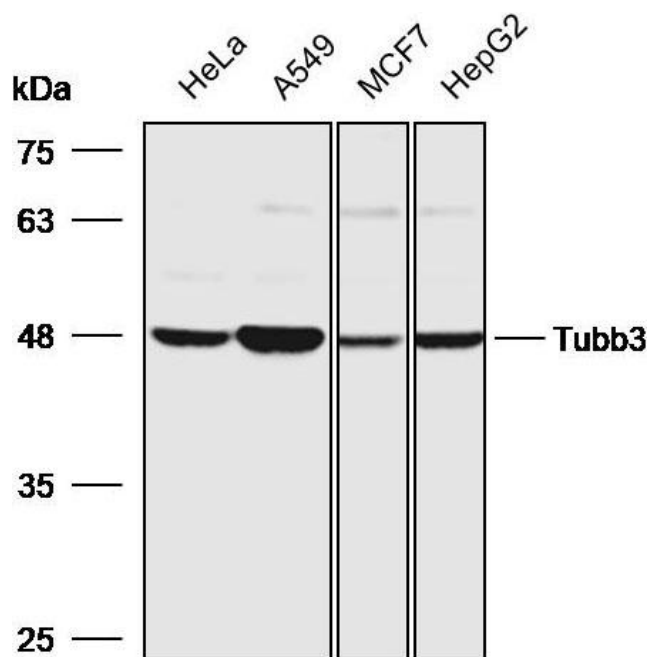
### Summary:

【Product name】 : Anti-Tubb3 antibody	【Source】 : Rabbit
【Isotype】 : IgG	【Species reactivity】 : Human
【Swiss Prot】 : Q13509	【Gene ID】 : 10381
【Calculated】 : MW:42/50kDa	【Observed】 : MW:48kDa
【Purification】 : Affinity purification	
【Tested applications】 : WB IHC	
【Recommended dilution】 : WB 1:1000-1:3000. IHC 1:50-200.	
【WB Positive sample】 :Hela,A549,MCF7,HepG2	
【IHC Positive sample】 : Human colorectal cancer	
【Subcellular location】 : Cytoplasm	
【Immunogen】 : A synthetic peptide of human Tubb3	
【Storage】 : Shipped at 4°C. Upon delivery aliquot and store at -20°C	

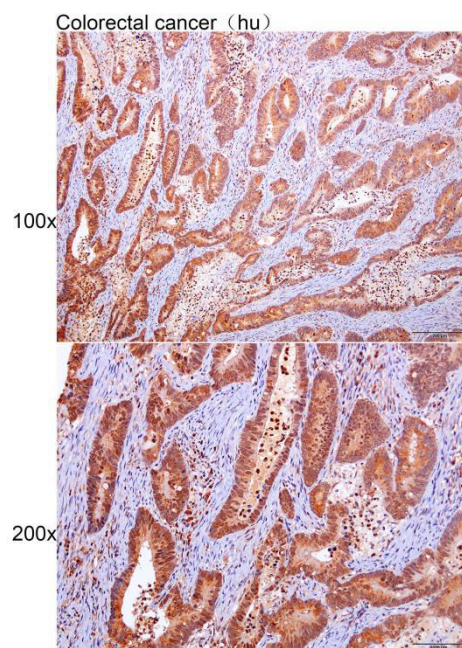
### Background:

This gene encodes a class III member of the beta tubulin protein family. Beta tubulins are one of two core protein families (alpha and beta tubulins) that heterodimerize and assemble to form microtubules. This protein is primarily expressed in neurons and may be involved in neurogenesis and axon guidance and maintenance. Mutations in this gene are the cause of congenital fibrosis of the extraocular muscles type 3. Alternate splicing results in multiple transcript variants. A pseudogene of this gene is found on chromosome 6.

## Verified picture



Western blot analysis with Tubb3 antibody diluted at 1:2000; Lane: HeLa, A549, MCF7, HepG2



Immunohistochemistry of paraffin-embedded Human colorectal cancer with Tubb3 antibody diluted at 1:100