

Anti-CTF1 Polyclonal Antibody

Cat: K107543P

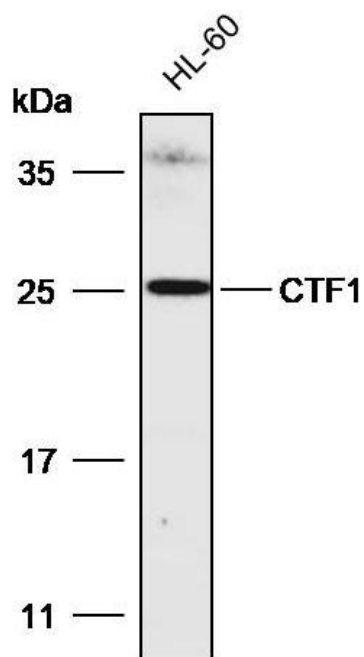
Summary:

【Product name】 : Anti-CTF1 antibody	【Source】 : Rabbit
【Isotype】 : IgG	【Species reactivity】 : Human Mouse Rat
【Swiss Prot】 : Q16619	【Gene ID】 : 1489
【Calculated】 : MW:21kDa	【Observed】 : MW:25kDa
【Purification】 : Affinity purification	
【Tested applications】 : WB IHC	
【Recommended dilution】 : WB 1:1000-1:3000. IHC 1:100-300.	
【WB Positive sample】 : HL-60	
【IHC Positive sample】 : Human testis cancer	
【Subcellular location】 : Cytoplasm	
【Immunogen】 : A synthetic peptide of human CTF1	
【Storage】 : Shipped at 4°C. Upon delivery aliquot and store at -20°C	

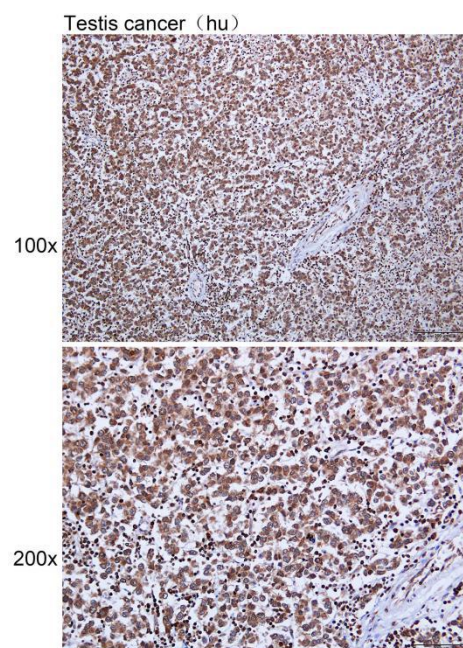
Background:

Induces cardiac myocyte hypertrophy in vitro. Binds to and activates the ILST/gp130 receptor.

Verified picture



Western blot analysis with CTF1 antibody diluted at 1:2000; Lane: HL-60



Immunohistochemistry of paraffin-embedded Human testis cancer with CTF1 antibody diluted at 1:100