

## Anti-SSX1/2/3/4/5/6/7/8/9 Polyclonal Antibody

Cat: K107517P

### Summary:

---

**【Product name】** : Anti-SSX1/2/3/4/5/6/7/8/9 antibody

**【Source】** : Rabbit

**【Isotype】** : IgG

**【Species reactivity】** : Human

**【Swiss Prot】** : Q16384/Q16385/Q99909/O60224/  
O60225/Q7RTT6/Q7RTT5/Q7RTT4/Q7RTT3

**【Gene ID】** :6756/6757/727837/10214/  
548313/6759/6758/280658

**【Calculated】** : MW:22kDa

**【Purification】** : Affinity purification

**【Tested applications】** : IHC

**【Recommended dilution】** : IHC 1:100-300.

**【IHC Positive sample】** : Human lung cancer

**【Subcellular location】** : Cytoplasm

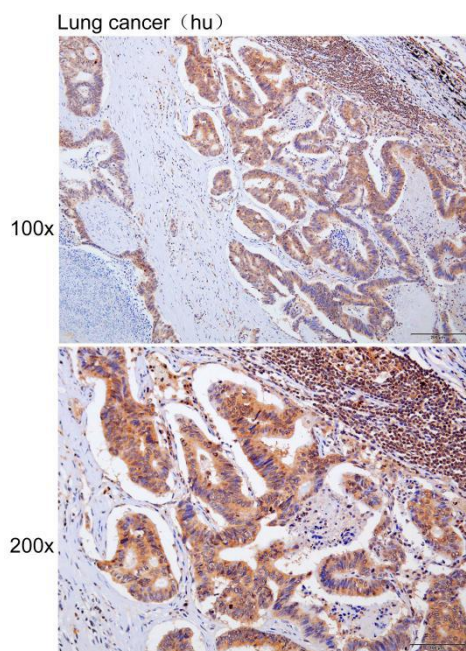
**【Immunogen】** : A synthetic peptide of human SSX1/2/3/4/5/6/7/8/9

**【Storage】** : Shipped at 4°C. Upon delivery aliquot and store at -20°C

### Background:

---

## Verified picture



Immunohistochemistry of paraffin-embedded  
Human lung cancer with SSX1/2/3/4/5/6/7/8/9  
antibody diluted at 1:200