

Anti-TCF7L2 Polyclonal Antibody

Cat: K107478P

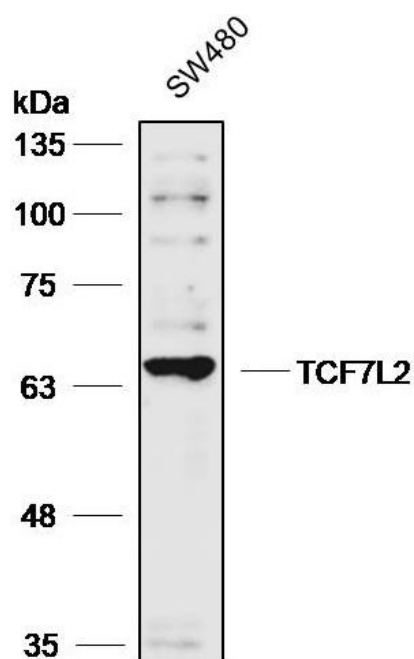
Summary:

【Product name】 : Anti-TCF7L2 antibody	【Source】 : Rabbit
【Isotype】 : IgG	【Species reactivity】 : Human Mouse
【Swiss Prot】 : Q9NQB0	【Gene ID】 : 6934
【Calculated】 : MW:55/68kDa	【Observed】 : MW:68kDa
【Purification】 : Affinity purification	
【Tested applications】 : WB IHC	
【Recommended dilution】 : WB 1:5000-8000. IHC 1:100-300.	
【WB Positive sample】 : SW480	
【IHC Positive sample】 : Human ovarian cancer and Human pancreatic cancer	
【Subcellular location】 : Nucleus	
【Immunogen】 : A synthetic peptide of human TCF7L2	
【Storage】 : Shipped at 4°C. Upon delivery aliquot and store at -20°C	

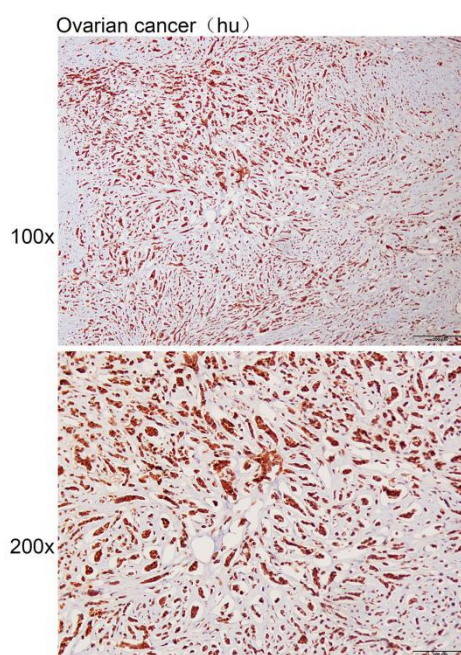
Background:

Participates in the Wnt signaling pathway and modulates MYC expression by binding to its promoter in a sequence-specific manner. Acts as repressor in the absence of CTNNB1, and as activator in its presence. Activates transcription from promoters with several copies of the Tcf motif 5'-CCTTTGATC-3' in the presence of CTNNB1. TLE1, TLE2, TLE3 and TLE4 repress transactivation mediated by TCF7L2/TCF4 and CTNNB1. Expression of dominant-negative mutants results in cell-cycle arrest in G1. Necessary for the maintenance of the epithelial stem-cell compartment of the small intestine.

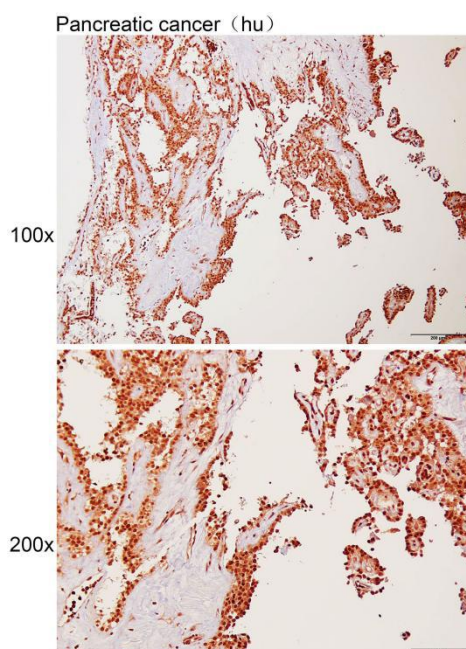
Verified picture



Western blot analysis with TCF7L2 antibody diluted at 1:6000; Lane: SW480



Immunohistochemistry of paraffin-embedded Human ovarian cancer with TCF7L2 antibody diluted at 1:200



Immunohistochemistry of paraffin-embedded Human pancreatic cancer with TCF7L2 antibody diluted at 1:200