

Anti-CALB2 Polyclonal Antibody

Cat: K107465P

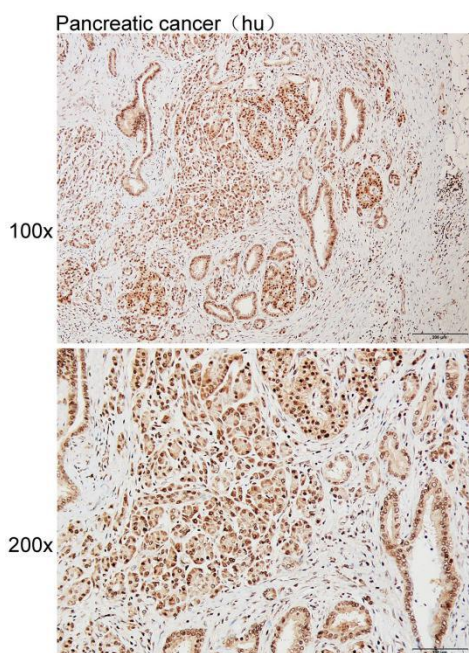
Summary:

【Product name】 : Anti-CALB2 antibody	【Source】 : Rabbit
【Isotype】 : IgG	【Species reactivity】 : Human Mouse Rat
【Swiss Prot】 : P22676	【Gene ID】 : 794
【Calculated】 : MW:31kDa	【Observed】 :
【Purification】 : Affinity purification	
【Tested applications】 : IHC	
【Recommended dilution】 : IHC 1:50-200.	
【WB Positive sample】 :	
【IHC Positive sample】 : Human pancreatic cancer and Human prostate cancer	
【Subcellular location】 : Cytoplasm Nucleus	
【Immunogen】 : A synthetic peptide of human CALB2	
【Storage】 : Shipped at 4°C. Upon delivery aliquot and store at -20°C	

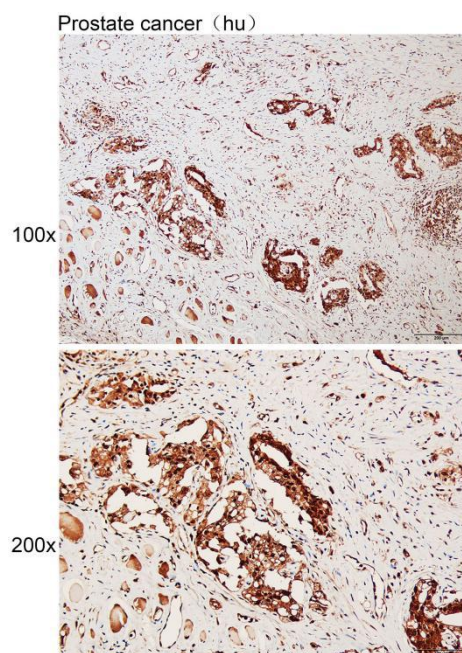
Background:

This gene encodes an intracellular calcium-binding protein belonging to the troponin C superfamily. Members of this protein family have six EF-hand domains which bind calcium. This protein plays a role in diverse cellular functions, including message targeting and intracellular calcium buffering. It also functions as a modulator of neuronal excitability, and is a diagnostic marker for some human diseases, including Hirschsprung disease and some cancers. Alternative splicing results in multiple transcript variants.

Verified picture



Immunohistochemistry of paraffin-embedded Human pancreatic cancer with CALB2 antibody diluted at 1:100



Immunohistochemistry of paraffin-embedded Human prostate cancer with CALB2 antibody diluted at 1:100