

## Anti-KIF5B Polyclonal Antibody

Cat: K107451P

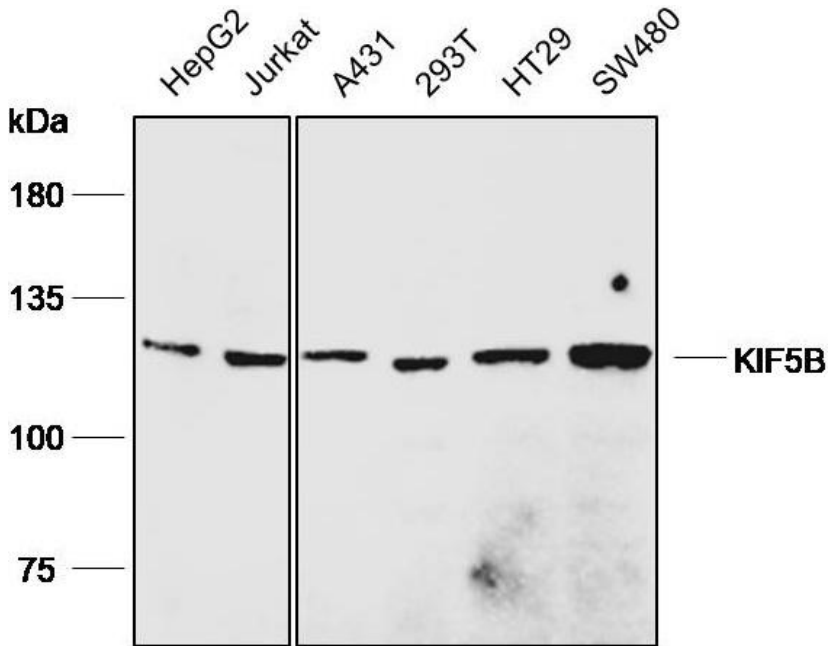
### Summary:

<b>【Product name】</b> : Anti-KIF5B antibody	<b>【Source】</b> : Rabbit
<b>【Isotype】</b> : IgG	<b>【Species reactivity】</b> : Human
<b>【Swiss Prot】</b> : P33176	<b>【Gene ID】</b> : 688
<b>【Calculated】</b> : MW:110kDa	<b>【Observed】</b> : MW:110kDa
<b>【Purification】</b> : Affinity purification	
<b>【Tested applications】</b> : WB IHC	
<b>【Recommended dilution】</b> : WB 1:5000-8000. IHC 1:50-200.	
<b>【WB Positive sample】</b> : HepG2, Jurkat, A431, 293T, HT-29, SW480	
<b>【IHC Positive sample】</b> : Human breast cancer and Human liver cancer	
<b>【Subcellular location】</b> : Cytoplasm Cell membrane	
<b>【Immunogen】</b> : A synthetic peptide of human KIF5B	
<b>【Storage】</b> : Shipped at 4°C. Upon delivery aliquot and store at -20°C	

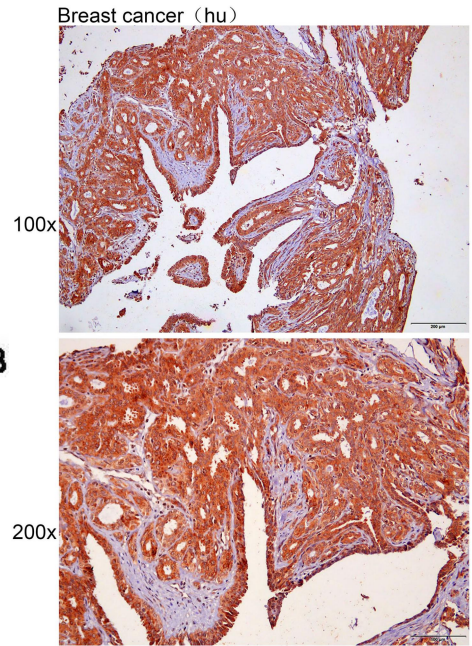
### Background:

Microtubule-dependent motor required for normal distribution of mitochondria and lysosomes. Can induce formation of neurite-like membrane protrusions in non-neuronal cells in a ZFYVE27-dependent manner (By similarity). Regulates centrosome and nuclear positioning during mitotic entry. During the G2 phase of the cell cycle in a BICD2-dependent manner, antagonizes dynein function and drives the separation of nuclei and centrosomes (PubMed:20386726). Required for anterograde axonal transportation of MAPK8IP3/JIP3 which is essential for MAPK8IP3/JIP3 function in axon elongation (By similarity).

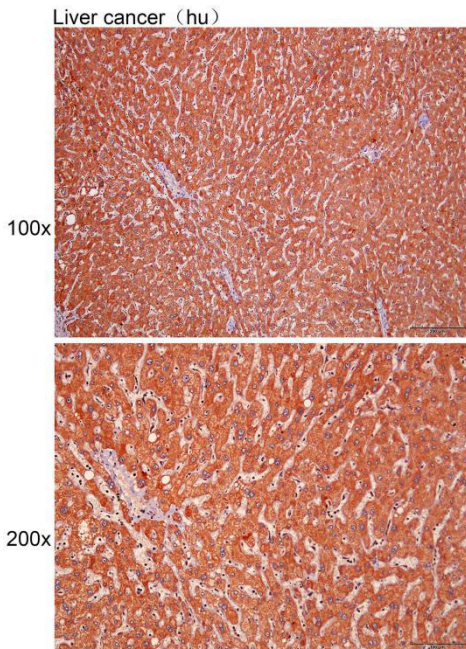
**Verified picture**



Western blot analysis with KIF5B antibody diluted at 1:6000; Lane: HepG2, Jurkat, A431, 293T, HT-29, SW480



Immunohistochemistry of paraffin-embedded Human breast cancer with KIF5B antibody diluted at 1:100



Immunohistochemistry of paraffin-embedded Human liver cancer with KIF5B antibody diluted at 1:100