

Anti-EID1 Polyclonal Antibody

Cat: K107434P

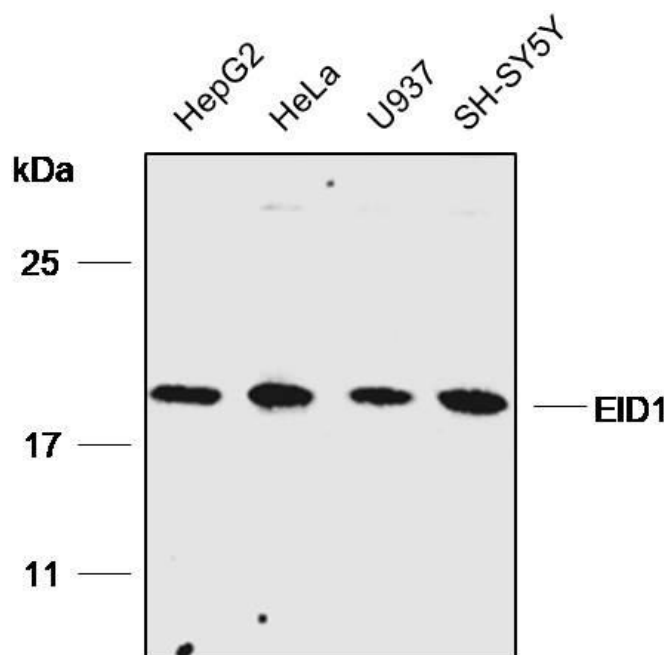
Summary:

【Product name】 : Anti-EID1 antibody	【Source】 : Rabbit
【Isotype】 : IgG	【Species reactivity】 : Human
【Swiss Prot】 : Q9Y6B2	【Gene ID】 : 23741
【Calculated】 : MW:19/21kDa	【Observed】 : MW:21kDa
【Purification】 : Affinity purification	
【Tested applications】 : WB IHC	
【Recommended dilution】 : WB 1:1000-3000. IHC 1:50-200.	
【WB Positive sample】 : HepG2,HeLa,U937,SH-SY5Y	
【IHC Positive sample】 : Human endometrial cancer and Human ovarian cancer	
【Subcellular location】 : Nucleus Cytoplasm	
【Immunogen】 : A synthetic peptide of human EID1	
【Storage】 : Shipped at 4°C. Upon delivery aliquot and store at -20°C	

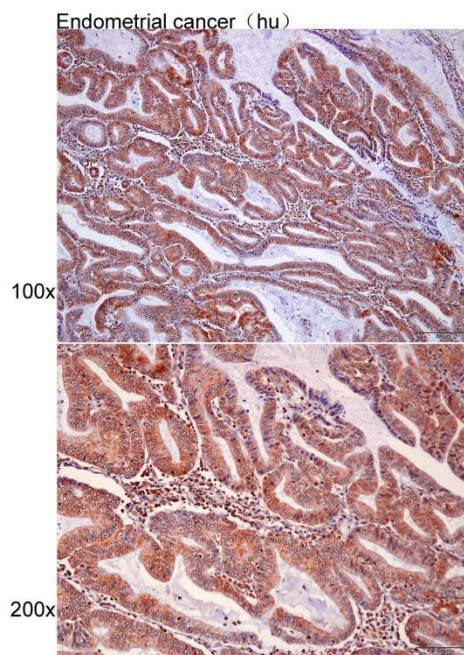
Background:

Interacts with RB1 and EP300 and acts as a repressor of MYOD1 transactivation. Inhibits EP300 and CBP histone acetyltransferase activity. May be involved in coupling cell cycle exit to the transcriptional activation of genes required for cellular differentiation. May act as a candidate coinhibitory factor for NROB2 that can be directly linked to transcription inhibitory mechanisms.

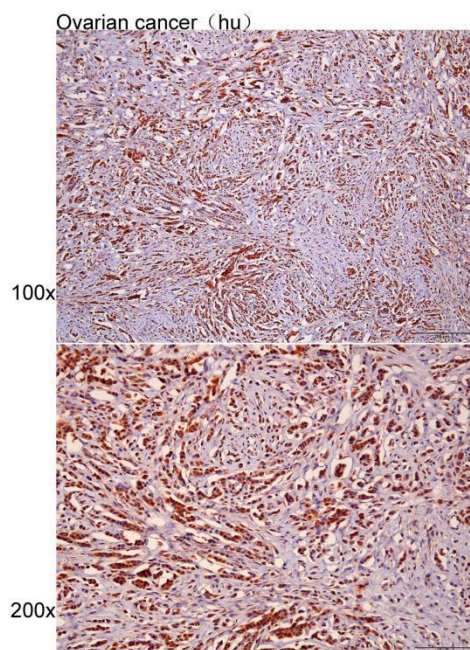
Verified picture



Western blot analysis with EID1 antibody diluted at 1:2000; Lane: HepG2, HeLa, U937, SH-SY5Y



Immunohistochemistry of paraffin-embedded Human endometrial cancer with EID1 antibody diluted at 1:100



Immunohistochemistry of paraffin-embedded Human ovarian cancer with EID1 antibody diluted at 1:100