

## Anti-RALGPS1 Polyclonal Antibody

Cat: K107365P

### Summary:

---

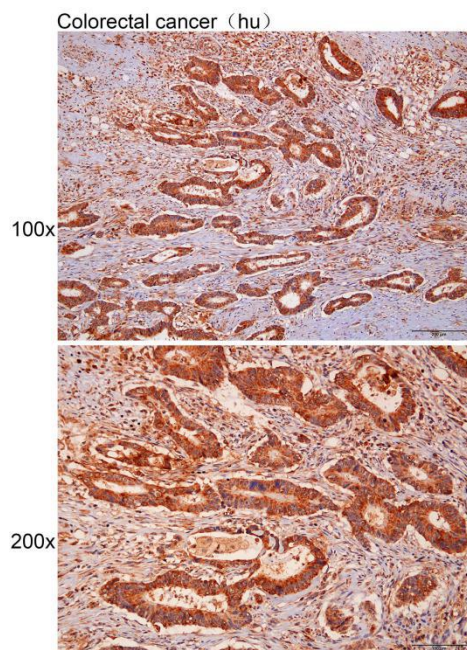
- 【Product name】** : Anti-NUBP2 antibody                      **【Source】** : Rabbit
- 【Isotype】** : IgG                                                              **【Species reactivity】** : Human
- 【Swiss Prot】** : Q5JS13                                                      **【Gene ID】** : 9649
- 【Calculated】** : MW:12/24/35/43/60/62kDa                      **【Observed】** :
- 【Purification】** : Affinity purification
- 【Tested applications】** : IHC
- 【Recommended dilution】** : IHC 1:25-100.
- 【WB Positive sample】** :
- 【IHC Positive sample】** : Human colorectal cancer
- 【Subcellular location】** : Cytoplasm Cell membrane
- 【Immunogen】** : A synthetic peptide of human NUBP2
- 【Storage】** : Shipped at 4°C. Upon delivery aliquot and store at -20°C

### Background:

---

Guanine nucleotide exchange factor (GEF) for the small GTPase RALA. May be involved in cytoskeletal organization (By similarity). Guanine nucleotide exchange factor for.

## Verified picture



Immunohistochemistry of paraffin-embedded  
Human colorectal cancer with NUBP2  
antibody diluted at 1:40