

## Anti-OSM Polyclonal Antibody

Cat: K107336P

### Summary:

---

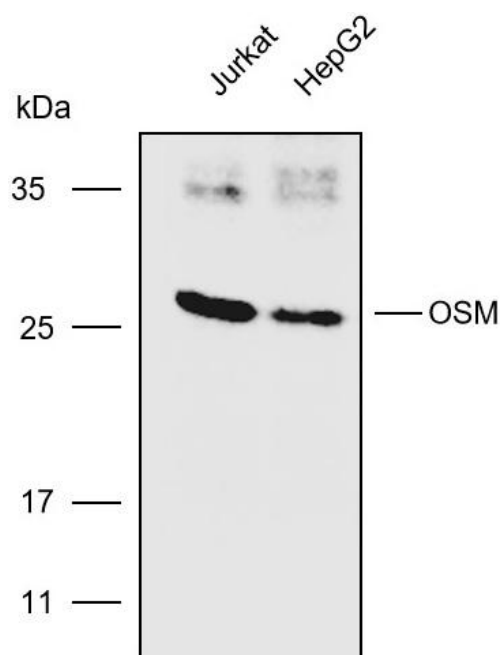
<b>【Product name】</b> : Anti-OSM antibody	<b>【Source】</b> : Rabbit
<b>【Isotype】</b> : IgG	<b>【Species reactivity】</b> : Human
<b>【Swiss Prot】</b> : P13725	<b>【Gene ID】</b> : 5008
<b>【Calculated】</b> : MW:28kDa	<b>【Observed】</b> : MW:28kDa
<b>【Purification】</b> : Affinity purification	
<b>【Tested applications】</b> : WB	
<b>【Recommended dilution】</b> : WB 1:3000-5000.	
<b>【WB Positive sample】</b> : Jurkat,HepG2	
<b>【IHC Positive sample】</b> :	
<b>【Subcellular location】</b> : Secreted	
<b>【Immunogen】</b> : A synthetic peptide of human OSM	
<b>【Storage】</b> : Shipped at 4°C. Upon delivery aliquot and store at -20°C	

### Background:

---

This protein is a secreted cytokine and growth regulator that inhibits the proliferation of a number of tumor cell lines. This protein also regulates the production of other cytokines, including interleukin 6, granulocyte-colony stimulating factor and granulocyte-macrophage colony stimulating factor in endothelial cells. This gene and the related gene, leukemia inhibitory factor, also present on chromosome 22, may have resulted from the duplication of a common ancestral gene. Involved in the maturation of fetal hepatocytes, thereby promoting liver development and regeneration (By similarity).

## Verified picture



Western blot analysis with OSM antibody  
diluted at 1:4000; Lane: Jurkat, HepG2