

## Anti-CTBP2 Polyclonal Antibody

Cat: K107323P

### Summary:

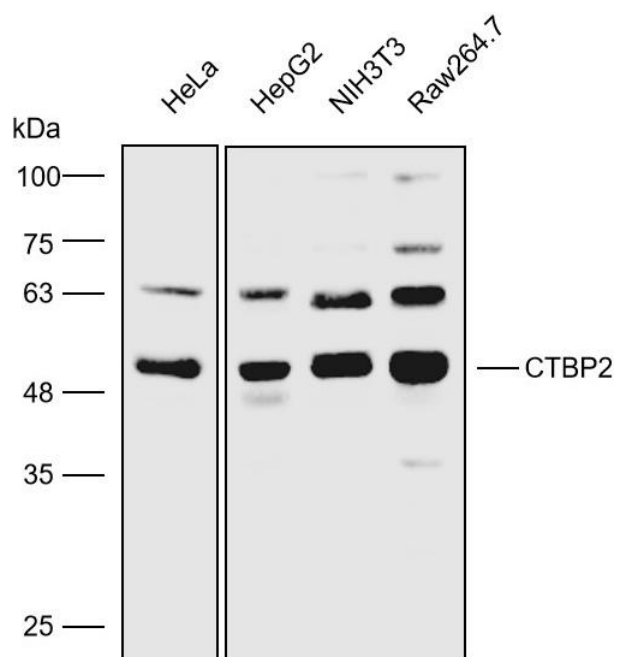
---

<b>【Product name】</b> : Anti-CTBP2 antibody	<b>【Source】</b> : Rabbit
<b>【Isotype】</b> : IgG	<b>【Species reactivity】</b> : Human Mouse
<b>【Swiss Prot】</b> : P56545	<b>【Gene ID】</b> : 1488
<b>【Calculated】</b> : MW:49kDa	<b>【Observed】</b> : MW:49kDa
<b>【Purification】</b> : Affinity purification	
<b>【Tested applications】</b> : WB IHC	
<b>【Recommended dilution】</b> : WB 1:5000-8000. IHC 1:100-300.	
<b>【WB Positive sample】</b> : HeLa,HepG2,NIH3T3,Raw264.7	
<b>【IHC Positive sample】</b> : Human prostate cancer and Human stomach cancer	
<b>【Subcellular location】</b> : Nucleus	
<b>【Immunogen】</b> : A synthetic peptide of human CTBP2	
<b>【Storage】</b> : Shipped at 4°C. Upon delivery aliquot and store at -20°C	

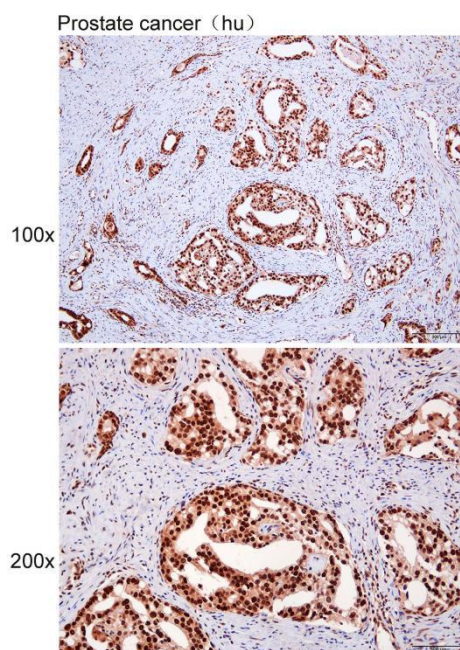
### Background:

This gene produces alternative transcripts encoding two distinct proteins. One protein is a transcriptional repressor, while the other isoform is a major component of specialized synapses known as synaptic ribbons. Both proteins contain a NAD<sup>+</sup> binding domain similar to NAD<sup>+</sup>-dependent 2-hydroxyacid dehydrogenases. A portion of the 3' untranslated region was used to map this gene to chromosome 21q21.3; however, it was noted that similar loci elsewhere in the genome are likely. Blast analysis shows that this gene is present on chromosome 10. Several transcript variants encoding two different isoforms have been found for this gene.

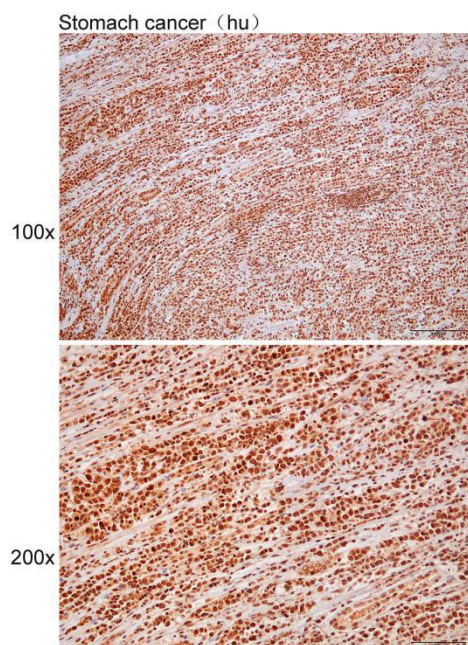
## Verified picture



Western blot analysis with CTBP2 antibody diluted at 1:6000; Lane: HeLa, HepG2, NIH3T3, Raw264.7



Immunohistochemistry of paraffin-embedded Human prostate cancer with CTBP2 antibody diluted at 1:200



Immunohistochemistry of paraffin-embedded Human stomach cancer with CTBP2 antibody diluted at 1:200