

## Anti-BCL6 Polyclonal Antibody

Cat:K107291P

### Summary:

---

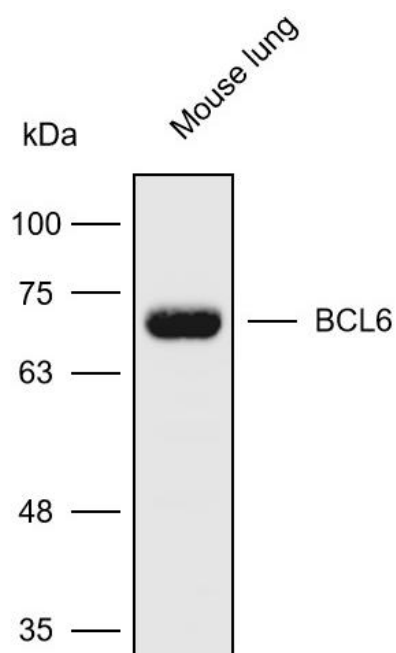
<b>【Product name】</b> : Anti-BCL6 antibody	<b>【Source】</b> : Rabbit
<b>【Isotype】</b> : IgG	<b>【Species reactivity】</b> : Human Mouse
<b>【Swiss Prot】</b> : P41182	<b>【Gene ID】</b> : 604
<b>【Calculated】</b> : MW:79/72kDa	<b>【Observed】</b> : MW:70kDa
<b>【Purification】</b> : Affinity purification	
<b>【Tested applications】</b> : WB	
<b>【Recommended dilution】</b> : WB 1:5000-8000.	
<b>【WB Positive sample】</b> : Mouse lung	
<b>【Subcellular location】</b> : Nucleus	
<b>【Immunogen】</b> : A synthetic peptide of human BCL6	
<b>【Storage】</b> : Shipped at 4°C. Upon delivery aliquot and store at -20°C	

### Background:

---

The protein encoded by this gene is a zinc finger transcription factor and contains an N-terminal POZ domain. This protein acts as a sequence-specific repressor of transcription, and has been shown to modulate the transcription of STAT-dependent IL-4 responses of B cells. This protein can interact with a variety of POZ-containing proteins that function as transcription corepressors. This gene is found to be frequently translocated and hypermutated in diffuse large-cell lymphoma (DLCL), and may be involved in the pathogenesis of DLCL. Alternatively spliced transcript variants encoding different protein isoforms have been found for this gene.

## Verified picture



Western blot analysis with BCL6 antibody  
diluted at 1:6000; Lane: Mouse lung