

Anti-CALB2 Polyclonal Antibody

Cat: K107011P

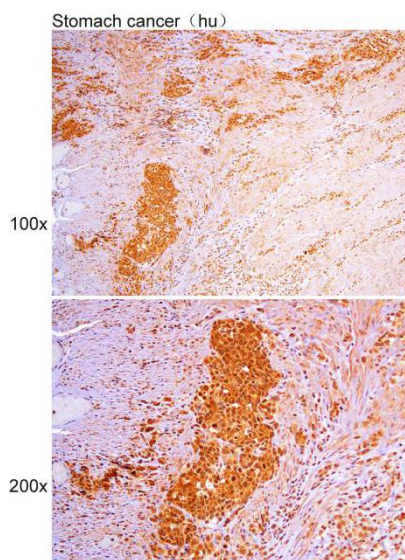
Summary:

- 【Product name】** : Anti-CALB2 antibody **【Source】** : Rabbit
【Isotype】 : IgG **【Species reactivity】** : Human Mouse Rat
【Swiss Prot】 : P22676 **【Gene ID】** : 794
【Calculated】 : MW:32kDa **【Observed】** : MW:
【Purification】 : Affinity purification
【Tested applications】 : IHC
【Recommended dilution】 : IHC 1:50-200.
【IHC Positive sample】 : Human stomach cancer
【Subcellular location】 : Cytoplasm Nucleus
【Immunogen】 : A synthetic peptide of human CALB2
【Storage】 : Shipped at 4°C. Upon delivery aliquot and store at -20°C

Background:

This gene encodes an intracellular calcium-binding protein belonging to the troponin C superfamily. Members of this protein family have six EF-hand domains which bind calcium. It also functions as a modulator of neuronal excitability, and is a diagnostic marker for some human diseases, including Hirschsprung disease and some cancers. Alternative splicing results in multiple transcript variants.

Verified picture



Immunohistochemistry of paraffin-embedded
Human stomach cancer with CALB2 antibody
diluted at 1:50