

## Anti-CD2AP Polyclonal Antibody

Cat: K106926P

### Summary:

---

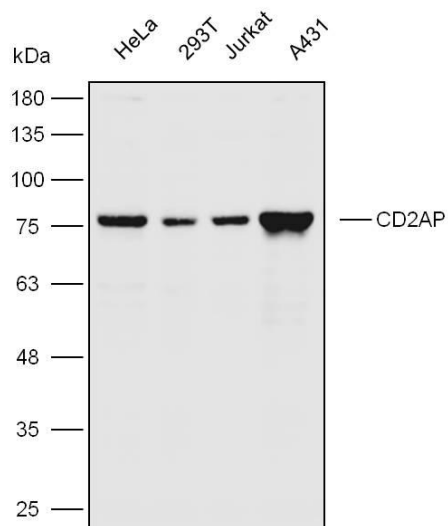
- 【Product name】** :Anti-CD2AP antibody      **【Source】** : Rabbit  
**【Isotype】** : IgG      **【Species reactivity】** : Human  
**【Swiss Prot】** : Q9Y5K6      **【Gene ID】** : 23607  
**【Calculated】** : MW:71kDa      **【Observed】** : MW:76kDa  
**【Purification】** : Affinity purification  
**【Tested applications】** : WB  
**【Recommended dilution】** : WB 1:5000-8000.  
**【WB Positive sample】** : HeLa 293T Jurkat and A431  
**【Subcellular location】** : Cytoplasm  
**【Immunogen】** : A synthetic peptide of human CD2AP  
**【Storage】** : Shipped at 4°C. Upon delivery aliquot and store at -20°C

### Background:

---

Seems to act as an adapter protein between membrane proteins and the actin cytoskeleton (PubMed:10339567). In collaboration with CBLC, modulates the rate of RET turnover and may act as regulatory checkpoint that limits the potency of GDNF on neuronal survival. Controls CBLC function, converting it from an inhibitor to a promoter of RET degradation (By similarity). May play a role in receptor clustering and cytoskeletal polarity in the junction between T-cell and antigen-presenting cell (By similarity).

## Verified picture



Western blot analysis with CD2AP antibody  
diluted at 1:6000