

Anti-CLTC Polyclonal Antibody

Cat: K110284P

Summary:

【Product name】 : Anti-CLTC antibody

【Source】 : Rabbit

【Isotype】 : IgG

【Species reactivity】 : Human Mouse Rat

Predicted: Cow

【Swiss Prot】 : Q00610

【Gene ID】 : 1213

【Calculated】 : MW:188/192kDa

【Observed】 : MW:175kDa

【Purification】 : Octanoic acid-ammonium sulfate precipitation

【Tested applications】 : WB IHC

【Recommended dilution】 : WB 1:1000-3000. IHC 1:50-200.

【WB Positive sample】 : HeLa, SH-SY5Y, A431, NIH3T3, PC-12, Jurkat, Mouse kidney, Mouse brain, Rat

brain

【IHC Positive sample】 : Human liver cancer

【Subcellular location】 : Cytoplasm Cell membrane

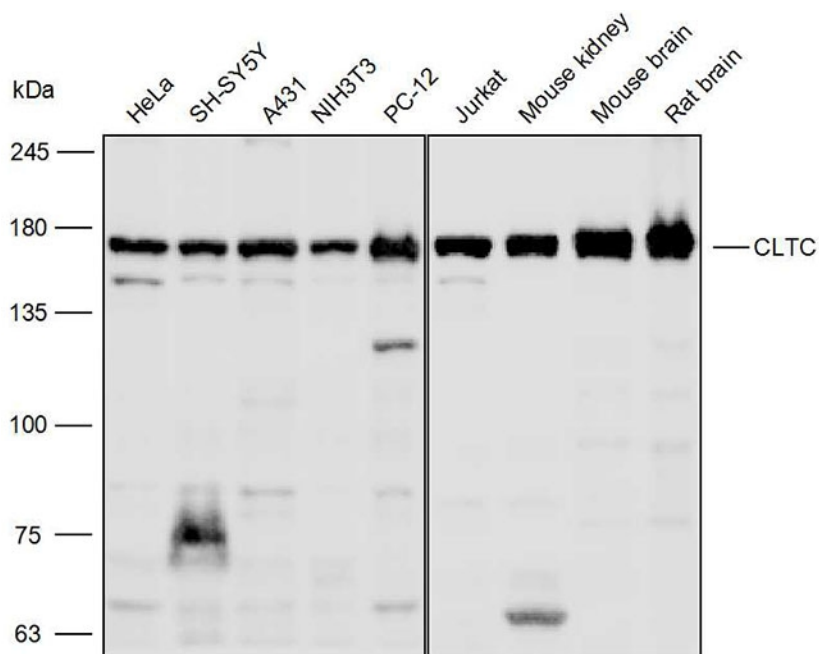
【Immunogen】 : A synthetic peptide of CLTC

【Storage】 : Shipped at 4°C. Upon delivery aliquot and store at -20°C

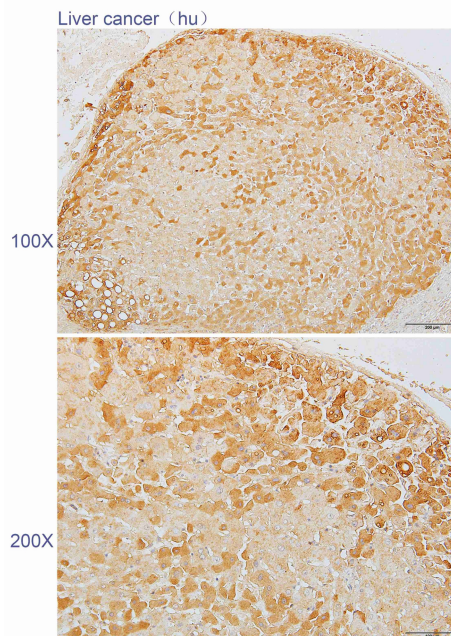
Background:

Clathrin is a major protein component of the cytoplasmic face of intracellular organelles, called coated vesicles and coated pits. These specialized organelles are involved in the intracellular trafficking of receptors and endocytosis of a variety of macromolecules. The basic subunit of the clathrin coat is composed of three heavy chains and three light chains. [provided by RefSeq, Jul 2008]

Verified picture



Western blot analysis with CLTC antibody diluted at 1:2000; Lane: HeLa, SH-SY5Y, A431, NIH/3T3, PC12, Jurkat, Mouse kidney, Mouse brain, Rat brain



Immunohistochemistry of paraffin-embedded Human liver cancer using CLTC antibody diluted at 1:100