

Anti-SPSB4 Polyclonal Antibody

Cat: K110274P

Summary:

【Product name】 : Anti-SPSB4 antibody

【Source】 : Rabbit

【Isotype】 : IgG

【Species reactivity】 : Human Mouse Rat

Predicted:Zebrafish Cow

【Swiss Prot】 : Q96A44

【Gene ID】 : 92369

【Calculated】 : MW:30kDa

【Observed】 : MW:33kDa

【Purification】 : Affinity purification

【Tested applications】 : WB

【Recommended dilution】 : WB 1:1000-3000.

【WB Positive sample】 : SHSY5Y,Mouse brain

【Subcellular location】 : Cytoplasm

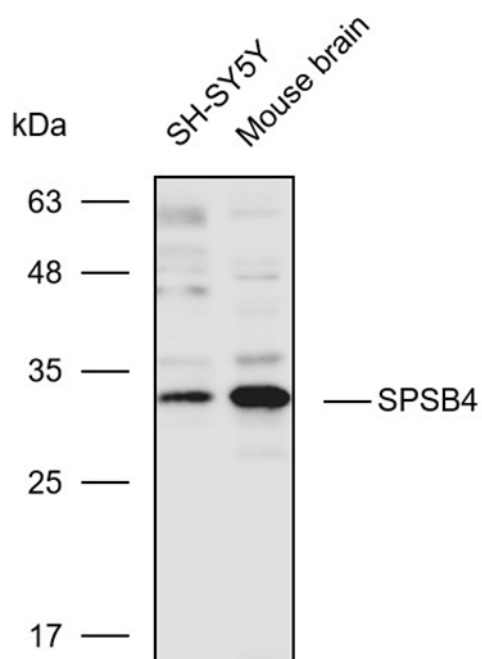
【Immunogen】 : A synthetic peptide of human SPSB4

【Storage】 : Shipped at 4°C. Upon delivery aliquot and store at -20°C

Background:

Substrate recognition component of a SCF-like ECS (Elongin BC-CUL2/5-SOCS-box protein) E3 ubiquitin-protein ligase complex which mediates the ubiquitination and subsequent proteasomal degradation of target proteins. Negatively regulates nitric oxide (NO) production and limits cellular toxicity in activated macrophages by mediating the ubiquitination and proteasomal degradation of NOS2. Acts as a bridge which links NOS2 with the ECS E3 ubiquitin ligase complex components ELOC and CUL5. Diminishes EphB2-dependent cell repulsive responses by mediating the ubiquitination and degradation of EphB2/CTF2. Regulates cellular clock function by mediating the ubiquitin/proteasome-dependent degradation of the circadian transcriptional repressor NR1D1.

Verified picture



Western blot analysis with SPSB4 antibody diluted at 1:2000; Lane: SHSY5Y, Mouse brain