

## Anti-TUBA1A Polyclonal Antibody

Cat: K109781P

### Summary:

---

**【Product name】** : Anti-TUBA1A Antibody

**【Source】** : Rabbit

**【Isotype】** : IgG

**【Species reactivity】** : Human Mouse Rat

**【Swiss Prot】** : Q71U36

**【Gene ID】** : 7846

**【Calculated】** : MW:46/50kDa

**【Observed】** : MW:53kDa

**【Purification】** : Affinity purification

**【Tested applications】** : WB IHC

**【Recommended dilution】** : WB 1:1000-3000. IHC 1:50-200.

**【WB Positive sample】** : Jurkat,Raji,293T,A431,HeLa,HepG2,MCF-7,PC-3M-IE8,U87,NIH3T3,HEK293,  
L-02,Mouse brain, Rat brain

**【IHC Positive sample】** : Human prostate cancer

**【Subcellular location】** : Cytoplasm

**【Immunogen】** : Recombinant protein of human TUBA1A

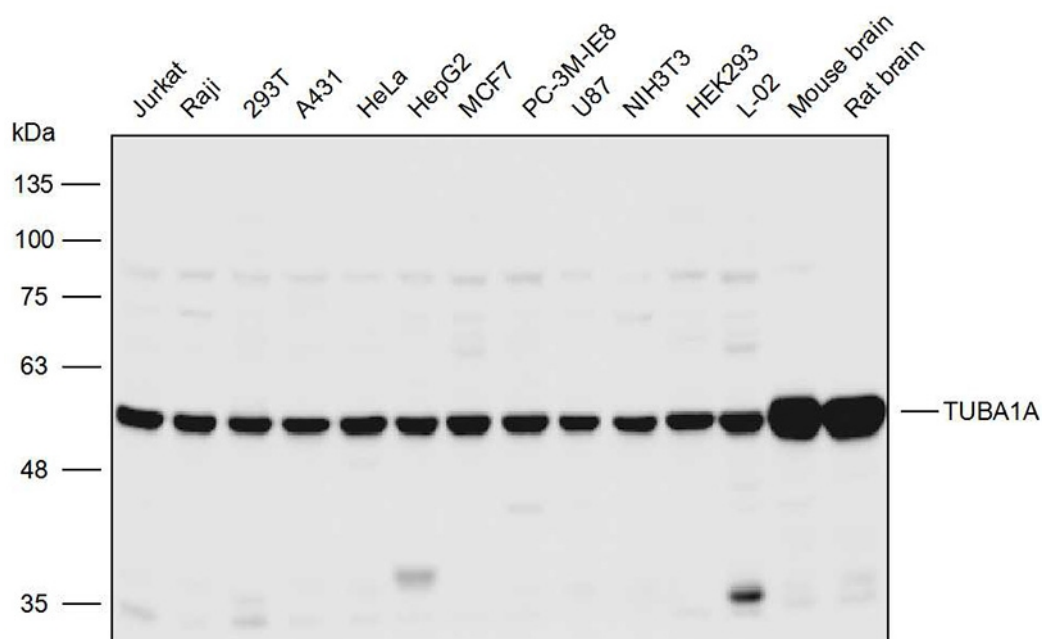
**【Storage】** : Shipped at 4°C. Upon delivery aliquot and store at -20°C

### Background:

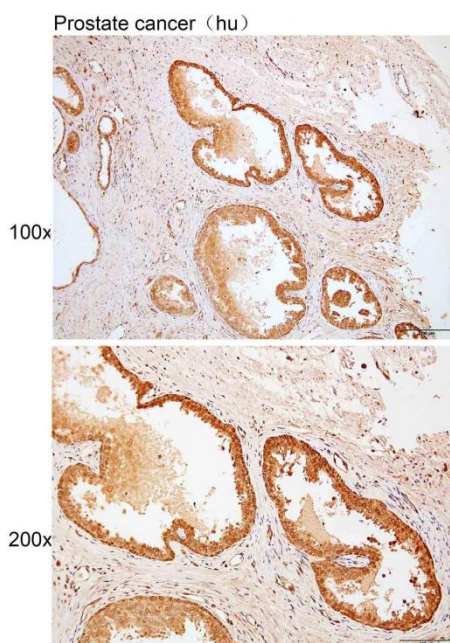
---

Tubulin is the major constituent of microtubules. It binds two moles of GTP, one at an exchangeable site on the beta chain and one at a non-exchangeable site on the alpha chain.

## Verified picture



Western blot analysis with TUBA1A antibody diluted at 1:2000; Lane: Jurkat, Raji, 293T, A431, HeLa, HepG2, MCF-7, PC-3M-IE8, U87, NIH3T3, HEK293, L-02, Mouse brain, Rat brain



Immunohistochemistry of paraffin-embedded Human prostate cancer with TUBA1A antibody diluted at 1:100