

Anti-TUBB2C Polyclonal Antibody

Cat: K109768P

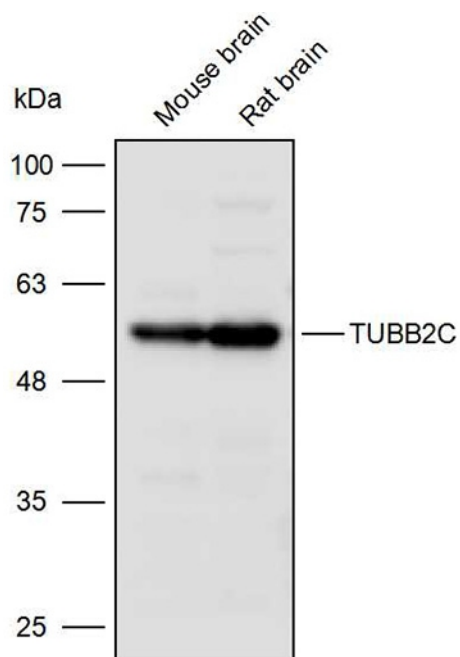
Summary:

【Product name】 : Anti-TUBB2C Antibody	【Source】 : Rabbit
【Isotype】 : IgG	【Species reactivity】 : Human Mouse Rat
【Swiss Prot】 : P68371	【Gene ID】 : 10383
【Calculated】 : MW:50kDa	【Observed】 : MW:55kDa
【Purification】 : Affinity purification	
【Tested applications】 : WB IHC	
【Recommended dilution】 : WB 1:8000-12000. IHC 1:100-300.	
【WB Positive sample】 : Mouse brain, Rat brain	
【IHC Positive sample】 : Human colorectal cancer	
【Subcellular location】 : Cytoplasm	
【Immunogen】 : Recombinant protein of human TUBB2C	
【Storage】 : Shipped at 4°C. Upon delivery aliquot and store at -20°C	

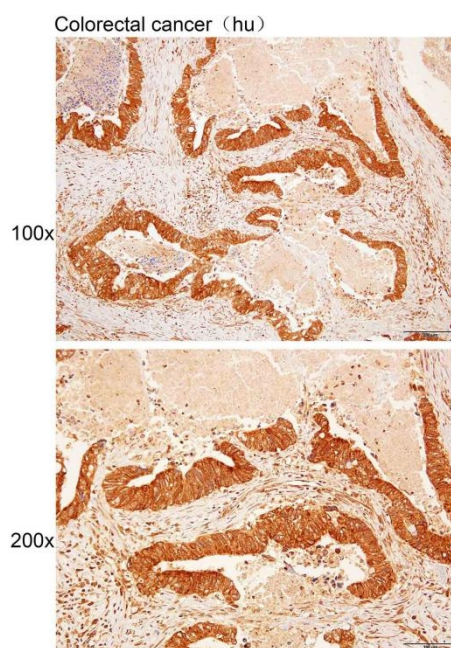
Background:

Tubulin is the major constituent of microtubules. It binds two moles of GTP, one at an exchangeable site on the beta chain and one at a non-exchangeable site on the alpha chain.

Verified picture



Western blot analysis with TUBB2C antibody diluted at 1:10000; Lane: Mouse brain, Rat brain



Immunohistochemistry of paraffin-embedded Human colorectal cancer with TUBB2C antibody diluted at 1:200