

Anti-MAF1 Polyclonal Antibody

Cat: K110197P

Summary:

【Product name】 : Anti-MAF1 Antibody

【Source】 : Rabbit

【Isotype】 : IgG

【Species reactivity】 : Human Mouse Rat

Predicted:Zebrafish Cow

【Swiss Prot】 : Q9H063

【Gene ID】 : 84232

【Calculated】 : MW:29kDa

【Purification】 : Affinity purification

【Tested applications】 : IHC

【Recommended dilution】 : IHC 1:50-200.

【IHC Positive sample】 : Human breast cancer

【Subcellular location】 : Cytoplasm Nucleus

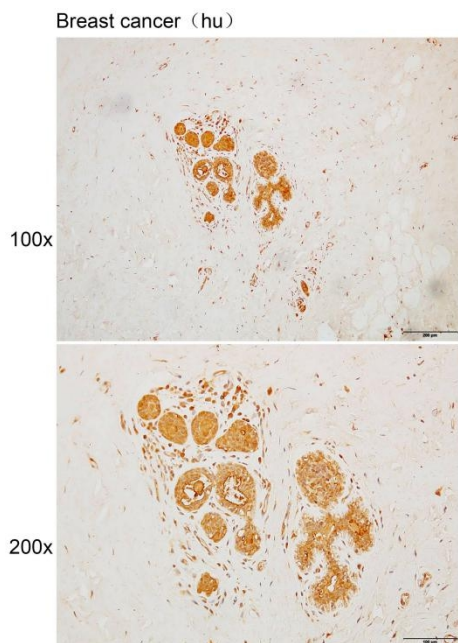
【Immunogen】 : A synthetic peptide of human MAF1

【Storage】 : Shipped at 4°C. Upon delivery aliquot and store at -20°C

Background:

This gene encodes a protein that is similar to Maf1, a *Saccharomyces cerevisiae* protein highly conserved in eukaryotic cells. Yeast Maf1 is a negative effector of RNA polymerase III (Pol III). It responds to changes in the cellular environment and represses pol III transcription. Biochemical studies identified the initiation factor TFIIIB as a target for Maf1-dependent repression.

Verified picture



Immunohistochemistry of paraffin-embedded Human breast cancer with MAF1 antibody diluted at 1:100