

Anti-PTH LH Polyclonal Antibody

Cat: K110085P

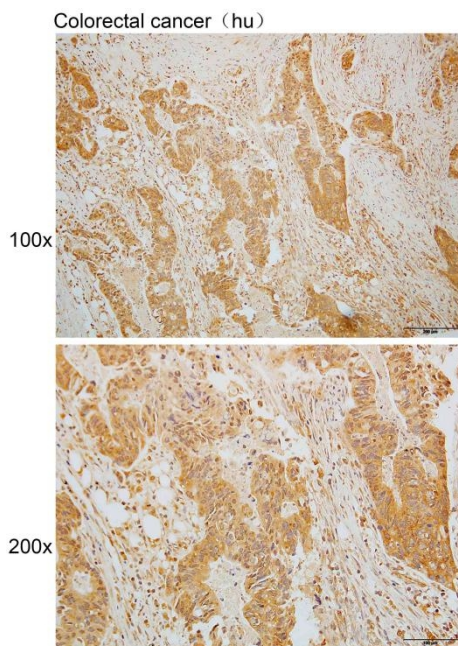
Summary:

【Product name】 : Anti-PTH LH Antibody	【Source】 : Rabbit
【Isotype】 : IgG	【Species reactivity】 : Human Mouse Rat
【Swiss Prot】 : P12272	【Gene ID】 : 5744
【Calculated】 : MW:20/24kDa	
【Purification】 : Affinity purification	
【Tested applications】 : IHC	
【Recommended dilution】 : IHC 1:50-200.	
【IHC Positive sample】 : Human colorectal cancer	
【Subcellular location】 : Cytoplasm Nucleus	
【Immunogen】 : Recombinant protein of human PTH LH	
【Storage】 : Shipped at 4°C. Upon delivery aliquot and store at -20°C	

Background:

The protein encoded by this gene is a member of the parathyroid hormone family. This hormone, via its receptor, PTHR1, regulates endochondral bone development and epithelial-mesenchymal interactions during the formation of the mammary glands and teeth. It is responsible for most cases of humoral hypercalcemia of malignancy, and mutations in this gene are associated with brachydactyly type E2 (BDE2). Alternatively spliced transcript variants have been found for this gene. There is also evidence for alternative translation initiation from non-AUG (CUG and GUG) start sites, downstream of the initiator AUG codon, resulting in nuclear forms of this hormone.

Verified picture



Immunohistochemistry of paraffin-embedded
Human colorectal cancer with PTHLH antibody
diluted at 1:100