

## Anti-UBE2O Polyclonal Antibody

Cat: K110075P

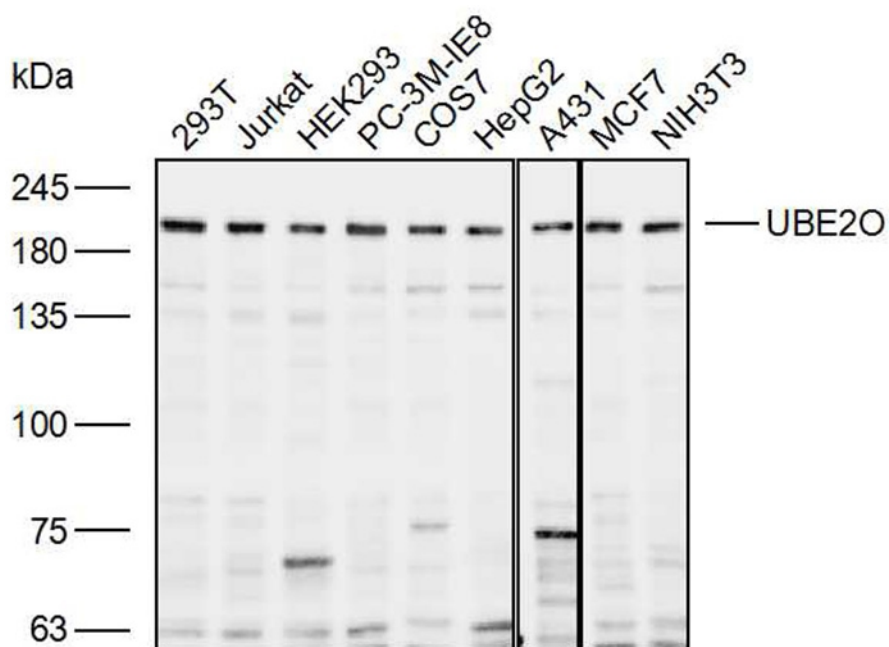
### Summary:

<b>【Product name】</b> : Anti-UBE2O Antibody	<b>【Source】</b> : Rabbit
<b>【Isotype】</b> : IgG	<b>【Species reactivity】</b> : Human Mouse Rat
<b>【Swiss Prot】</b> : Q9C0C9	<b>【Gene ID】</b> : 63893
<b>【Calculated】</b> : MW:141kDa	<b>【Observed】</b> : MW:200kDa
<b>【Purification】</b> : Octanoic acid-ammonium sulfate precipitation	
<b>【Tested applications】</b> : WB	
<b>【Recommended dilution】</b> : WB 1:1000-3000.	
<b>【WB Positive sample】</b> : 293T, Jurkat, HEK293, PC-3M-IE8, COS7, HepG2, A431, MCF7, NIH3T3	
<b>【Subcellular location】</b> : Cytoplasm Nucleus	
<b>【Immunogen】</b> : Recombinant protein of human UBE2O	
<b>【Storage】</b> : Shipped at 4°C. Upon delivery aliquot and store at -20°C	

### Background:

E2/E3 hybrid ubiquitin-protein ligase that displays both E2 and E3 ligase activities and mediates monoubiquitination of target proteins (PubMed:23455153, PubMed:24703950). Negatively regulates TRAF6-mediated NF-kappa-B activation independently of its E2 activity (PubMed:23381138). Acts as a positive regulator of BMP7 signaling by mediating monoubiquitination of SMAD6, thereby regulating adipogenesis (PubMed:23455153). Mediates monoubiquitination at different sites of the nuclear localization signal (NLS) of BAP1, leading to cytoplasmic retention of BAP1. Also able to monoubiquitinate the NLS of other chromatin-associated proteins, such as INO80 and CXXC1, affecting their subcellular location (PubMed:24703950). Acts as a regulator of retrograde transport by assisting the TRIM27:MAGEL2 E3 ubiquitin ligase complex to mediate 'Lys-63'-linked ubiquitination of WASHC1, leading to promote endosomal F-actin assembly (PubMed:23452853).

## Verified picture



Western blot analysis with UBE2O antibody diluted at 1:2000; Lane: 293T, Jurkat, HEK293, PC-3M-IE8, COS7, HepG2, A431, MCF7, NIH3T3