

## Anti-DPYSL2 Polyclonal Antibody

Cat: K109645P

### Summary:

---

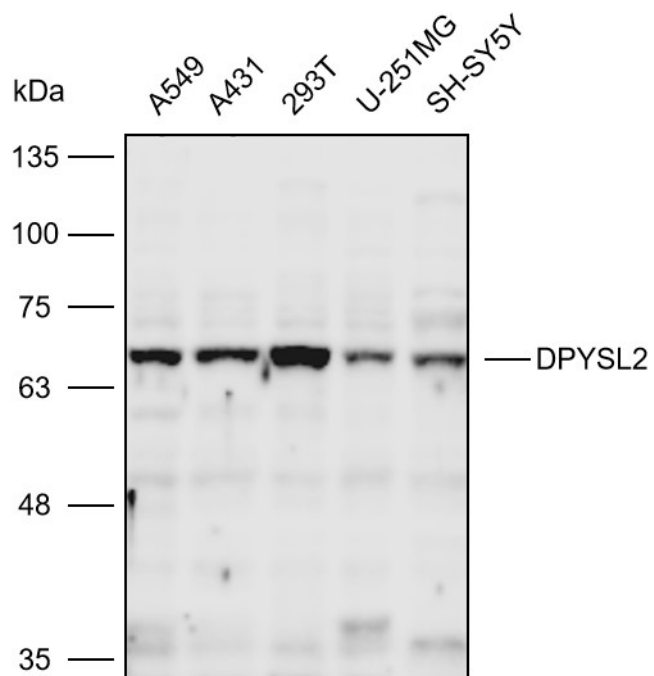
<b>【Product name】</b> : Anti-DPYSL2 antibody	<b>【Source】</b> : Rabbit
<b>【Isotype】</b> : IgG	<b>【Species reactivity】</b> : Human Mouse Rat
<b>【Swiss Prot】</b> :Q16555	<b>【Gene ID】</b> : 1808
<b>【Calculated】</b> : MW:58/62kDa	<b>【Observed】</b> : MW:65kDa
<b>【Purification】</b> : Affinity purification	
<b>【Tested applications】</b> : WB	
<b>【Recommended dilution】</b> : WB 1:1000-3000.	
<b>【WB Positive sample】</b> :A549,A431,293T,U-251MG,SH-SY5Y	
<b>【Subcellular location】</b> : Cytoplasm Cell membrane	
<b>【Immunogen】</b> : A synthetic peptide of Human DPYSL2	
<b>【Storage】</b> : Shipped at 4°C. Upon delivery aliquot and store at -20°C	

### Background:

---

This gene encodes a member of the collapsin response mediator protein family. Collapsin response mediator proteins form homo- and hetero-tetramers and facilitate neuron guidance, growth and polarity. The encoded protein promotes microtubule assembly and is required for Sema3A-mediated growth cone collapse, and also plays a role in synaptic signaling through interactions with calcium channels. This gene has been implicated in multiple neurological disorders, and hyperphosphorylation of the encoded protein may play a key role in the development of Alzheimer's disease. Alternatively spliced transcript variants encoding multiple isoforms have been observed for this gene.

## Verified picture



Western blot analysis with DPYSL2 antibody  
diluted at 1:2000; Lane: A549, A431, 293T,  
U-251MG, SH-SY5Y